


## TYPE SE STYLE (R)

**APPLICATION:** KINGWIRE Service Entrance Cable Style R (SER) is used to convey power from the service drop to the meter base and from the meter base to the distribution panel board. It can be used for both above ground service entrance and interior wiring applications at temperatures not to exceed 90°C.

- PRODUCT FEATURES:**
- KINGWIRE Type SE cable is constructed with AA-8000 series aluminum alloy, compact stranded conductors.
  - Cross-linked polyethylene insulation rated for a maximum operation temperature of 90°C in wet and dry locations.
  - Eco friendly sunlight resistant, flame retardant and heavy metal free Polyvinyl Chloride (PVC) Jacket.
  - Insulation and Jacket materials are in compliance with RoHS, Directive 2002/95/EC.
  - Sequential foot markings for easier inventory control management.

**STANDARDS:**  UL Standard 44 for type XHHW-2 conductors, UL Standard 854, Federal Specification JC-30B NEC, Approved for use in accordance with the requirements of the NEC NFPA 70, 2011 Edition.

KINGWIRE Service Entrance Cable Style R (SER) - 2 Conductor with Ground SER						
Size AWG & Construction	Stranding		Nominal Diameter (in)	Weight per 1000 ft. (lbs)	Ampacity (AMPS)*	
	Phase Conductors	Equipment Ground Conductor			90° C	Dwelling
6-6-6	7	-	.650	150	60	-
4-4-6	7	-	.681	196	75	-
4-4-4	7	-	.682	196	75	-

Notes: Data are approximate and subject to normal manufacturing tolerances.

\* To determine correct ampacity by conductor size, please consult the National Electric Code, latest edition.

**KINGWIRE Service Entrance Cable Style R (SER) - 3 Conductor with Ground SER**

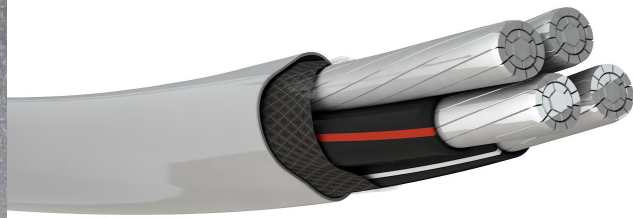
Size AWG & Construction	Stranding		Nominal Diameter (in)	Weight per 1000 ft. (lbs)	Ampacity (AMPS)*	
	Phase Conductors	Equipment Ground Conductor			90° C	Dwelling
8-8-8-8	Solid	Solid	.588	128	45	-
6-6-6-6	7	7	.684	180	60	-
4-4-4-6	7	7	.754	240	75	-
2-2-2-4	7	7	.893	344	100	100
1-1-1-3	19	7	1.003	432	115	110
1/0-1/0-1/0-2	19	7	1.097	521	135	125
2/0-2/0-2/0-1	19	19	1.197	633	150	150
3/0-3/0-3/0-1/0	19	19	1.314	771	175	175
4/0-4/0-4/0-2/0	19	19	1.443	942	205	200
250-250-250-3/0	37	19	1.601	1106	230	225
300-300-300-4/0	37	19	1.719	1360	255	230

**KINGWIRE Service Entrance Cable Style R (SER) - 4 Conductor with Ground SER**

Size AWG & Construction	Stranding		Nominal Diameter (in)	Weight per 1000 ft. (lbs)	Ampacity (AMPS)*	
	Phase Conductors	Equipment Ground Conductor			90° C	Dwelling
2-2-2-2-4	7	7	1.004	450	100	100
2/0-2/0-2/0-2/0-1	19	19	1.346	824	150	150
4/0-4/0-4/0-4/0-2/0	19	19	1.621	1226	205	200
250-250-250-250-3/0	37	19	1.950	1454	230	225

Notes: Data are approximate and subject to normal manufacturing tolerances.


\* To determine correct ampacity by conductor size, please consult the National Electric Code, latest edition.



## TYPE SE STYLE (R)

**APPLICATION:** KINGWIRE Service Entrance Cable Style R (SER) is used to convey power from the service drop to the meter base and from the meter base to the distribution panel board. It can be used for both above ground service entrance and interior wiring applications at temperatures not to exceed 90°C.

- PRODUCT FEATURES:**
- KINGWIRE Type SE cable is constructed with AA-8000 series aluminum alloy, compact stranded conductors.
  - Cross-linked polyethylene insulation rated for a maximum operation temperature of 90°C in wet and dry locations.
  - Eco friendly sunlight resistant, flame retardant and heavy metal free Polyvinyl Chloride (PVC) Jacket.
  - Insulation and Jacket materials are in compliance with RoHS, Directive 2002/95/EC.
  - Sequential foot markings for easier inventory control management.

**STANDARDS:**  UL Standard 44 for type XHHW-2 conductors, UL Standard 854, Federal Specification JC-30B NEC, Approved for use in accordance with the requirements of the NEC NFPA 70, 2011 Edition.

KINGWIRE Service Entrance Cable Style R (SER) - 2 Conductor with Ground SER						
Size AWG & Construction	Stranding		Nominal Diameter (in)	Weight per 1000 ft. (lbs)	Ampacity (AMPS)*	
	Phase Conductors	Equipment Ground Conductor			90° C	Dwelling
6-6-6	7	-	.650	150	60	-
4-4-6	7	-	.681	196	75	-
4-4-4	7	-	.682	196	75	-

Notes: Data are approximate and subject to normal manufacturing tolerances.

\* To determine correct ampacity by conductor size, please consult the National Electric Code, latest edition.

**KINGWIRE Service Entrance Cable Style R (SER) - 3 Conductor with Ground SER**

Size AWG & Construction	Stranding		Nominal Diameter (in)	Weight per 1000 ft. (lbs)	Ampacity (AMPS)*	
	Phase Conductors	Equipment Ground Conductor			90° C	Dwelling
8-8-8-8	Solid	Solid	.588	128	45	-
6-6-6-6	7	7	.684	180	60	-
4-4-4-6	7	7	.754	240	75	-
2-2-2-4	7	7	.893	344	100	100
1-1-1-3	19	7	1.003	432	115	110
1/0-1/0-1/0-2	19	7	1.097	521	135	125
2/0-2/0-2/0-1	19	19	1.197	633	150	150
3/0-3/0-3/0-1/0	19	19	1.314	771	175	175
4/0-4/0-4/0-2/0	19	19	1.443	942	205	200
250-250-250-3/0	37	19	1.601	1106	230	225
300-300-300-4/0	37	19	1.719	1360	255	230

**KINGWIRE Service Entrance Cable Style R (SER) - 4 Conductor with Ground SER**

Size AWG & Construction	Stranding		Nominal Diameter (in)	Weight per 1000 ft. (lbs)	Ampacity (AMPS)*	
	Phase Conductors	Equipment Ground Conductor			90° C	Dwelling
2-2-2-2-4	7	7	1.004	450	100	100
2/0-2/0-2/0-2/0-1	19	19	1.346	824	150	150
4/0-4/0-4/0-4/0-2/0	19	19	1.621	1226	205	200
250-250-250-250-3/0	37	19	1.950	1454	230	225

Notes: Data are approximate and subject to normal manufacturing tolerances.

\* To determine correct ampacity by conductor size, please consult the National Electric Code, latest edition.