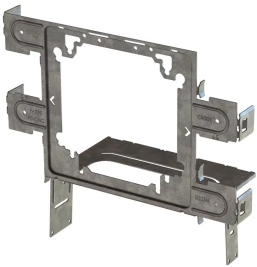




SNAP TO STUD ELECTRICAL BOX BRACKET, 2 1/2", 3 5/8", 4", 6" WALL DEPTH, 4", 4 11/16" BOX

CATALOG NUMBER

STS2346



CERTIFICATIONS



FEATURES

Snap to stud function makes installation fast and easy, saving time and increasing productivity

Self-leveling feature ensures the electrical box is always square to the stud, for a consistent and professional installation

Mounts to either side of the stud and can be mounted side by side on the same stud

Accommodates all stud depths, simplifying purchasing and pre-fab operations

Works with standard or adjustable single and double gang mud rings

Rigid design delivers consistency and quality during the trim out phase, helping reduce call backs and costly repairs

Additional mounting tabs allow the bracket to be secured to the front and inside face of the stud for extra stability

Unique fold-out tabs eliminate the need to use scrap pieces of floor track to provide rigidity when mounting to the open face of studs

Specially shaped key holes help keep the box assembled even when the mud ring is removed, providing greater access to the box in the field

PRODUCT ATTRIBUTES

Material: Steel

Finish: Electrogalvanized

Stud Wall Depth: 2 1/2" - 3 5/8"; 4" Min

Box Size: 4;4 11/16"

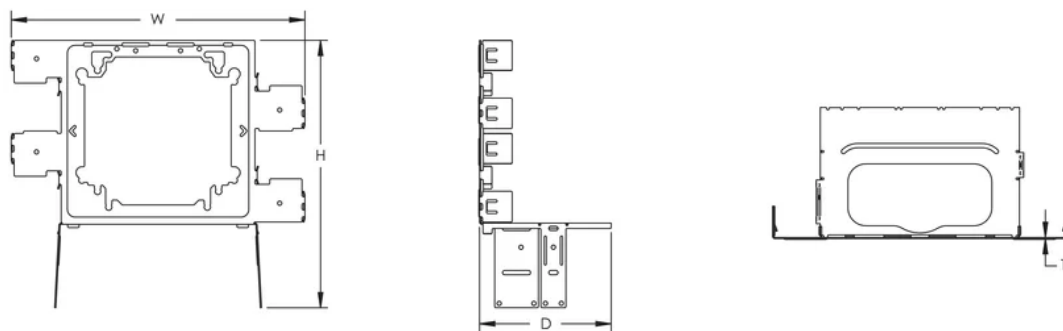
Depth (D): 3.625"

Height (H): 7.45"

Width (W): 8 1/4"

Thickness (T): 0.03"

DIAGRAMS



WARNING

nVent products shall be installed and used only as indicated in nVent's product instruction sheets and training materials. Instruction sheets are available at www.nvent.com and from your nVent customer service representative. Improper installation, misuse, misapplication or other failure to completely follow nVent's instructions and warnings may cause product malfunction, property damage, serious bodily injury and death and/or void your warranty.

North America

+1.800.753.9221

Option 1 – Customer Care

Option 2 – Technical Support

Europe

Netherlands:

+31 800-0200135

France:

+33 800 901 793

Europe

Germany:

800 1890272

Other Countries:

+31 13 5835404

APAC

Shanghai:

+ 86 21 2412 1618/19

Sydney:

+61 2 9751 8500



Our powerful portfolio of brands:
nVent.com **CADDY ERICO HOFFMAN RAYCHEM SCHROFF**
TRACER



SNAP TO STUD ELECTRICAL BOX BRACKET, 2 1/2", 3 5/8", 4", 6" WALL DEPTH, 4", 4 11/16" BOX

CATALOG NUMBER

STS2346



CERTIFICATIONS



FEATURES

Snap to stud function makes installation fast and easy, saving time and increasing productivity

Self-leveling feature ensures the electrical box is always square to the stud, for a consistent and professional installation

Mounts to either side of the stud and can be mounted side by side on the same stud

Accommodates all stud depths, simplifying purchasing and pre-fab operations

Works with standard or adjustable single and double gang mud rings

Rigid design delivers consistency and quality during the trim out phase, helping reduce call backs and costly repairs

Additional mounting tabs allow the bracket to be secured to the front and inside face of the stud for extra stability

Unique fold-out tabs eliminate the need to use scrap pieces of floor track to provide rigidity when mounting to the open face of studs

Specially shaped key holes help keep the box assembled even when the mud ring is removed, providing greater access to the box in the field

PRODUCT ATTRIBUTES

Material: Steel

Finish: Electrogalvanized

Stud Wall Depth: 2 1/2" - 3 5/8"; 4" Min

Box Size: 4;4 11/16"

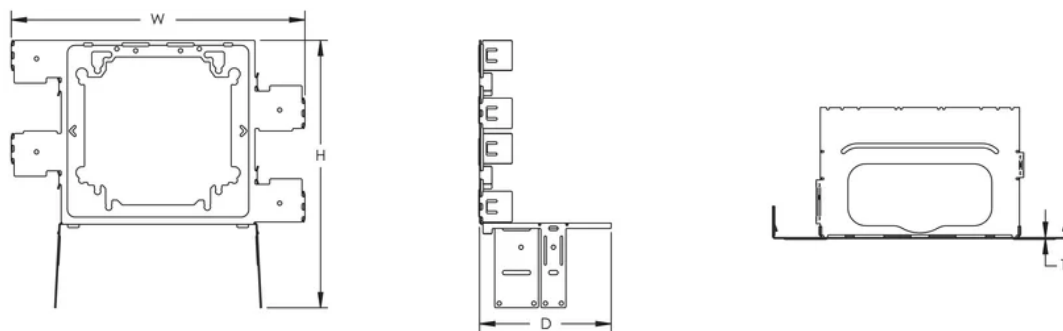
Depth (D): 3.625"

Height (H): 7.45"

Width (W): 8 1/4"

Thickness (T): 0.03"

DIAGRAMS



WARNING

nVent products shall be installed and used only as indicated in nVent's product instruction sheets and training materials. Instruction sheets are available at www.nvent.com and from your nVent customer service representative. Improper installation, misuse, misapplication or other failure to completely follow nVent's instructions and warnings may cause product malfunction, property damage, serious bodily injury and death and/or void your warranty.

North America

+1.800.753.9221

Option 1 – Customer Care

Option 2 – Technical Support

Europe

Netherlands:

+31 800-0200135

France:

+33 800 901 793

Europe

Germany:

800 1890272

Other Countries:

+31 13 5835404

APAC

Shanghai:

+ 86 21 2412 1618/19

Sydney:

+61 2 9751 8500



Our powerful portfolio of brands:
nVent.com CADDY ERICO HOFFMAN RAYCHEM SCHROFF
TRACER

© 2025 nVent. All nVent marks and logos are owned or licensed by nVent Services GmbH or its affiliates. All other trademarks are the property of their respective owners.

nVent reserves the right to change specifications without notice.