

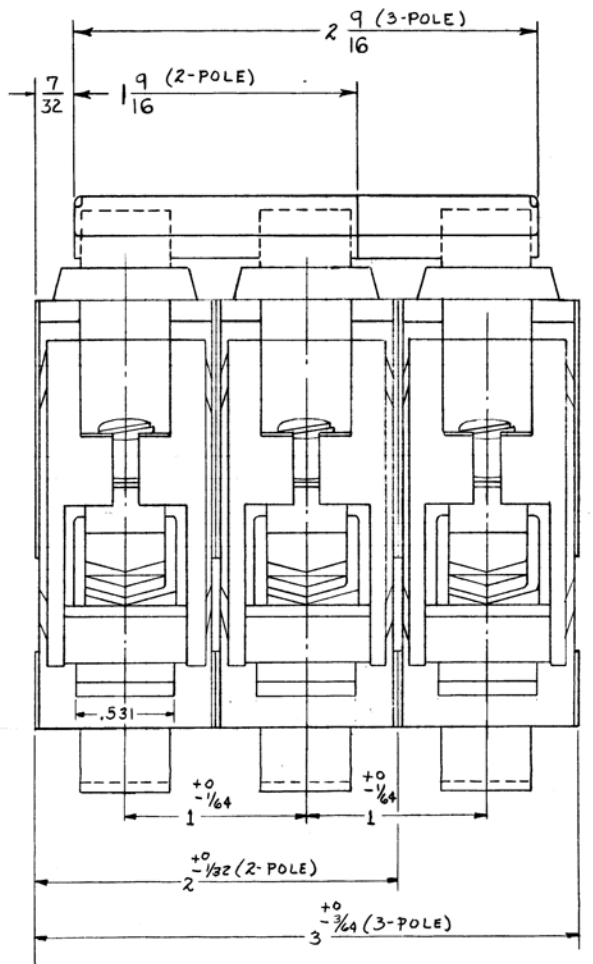
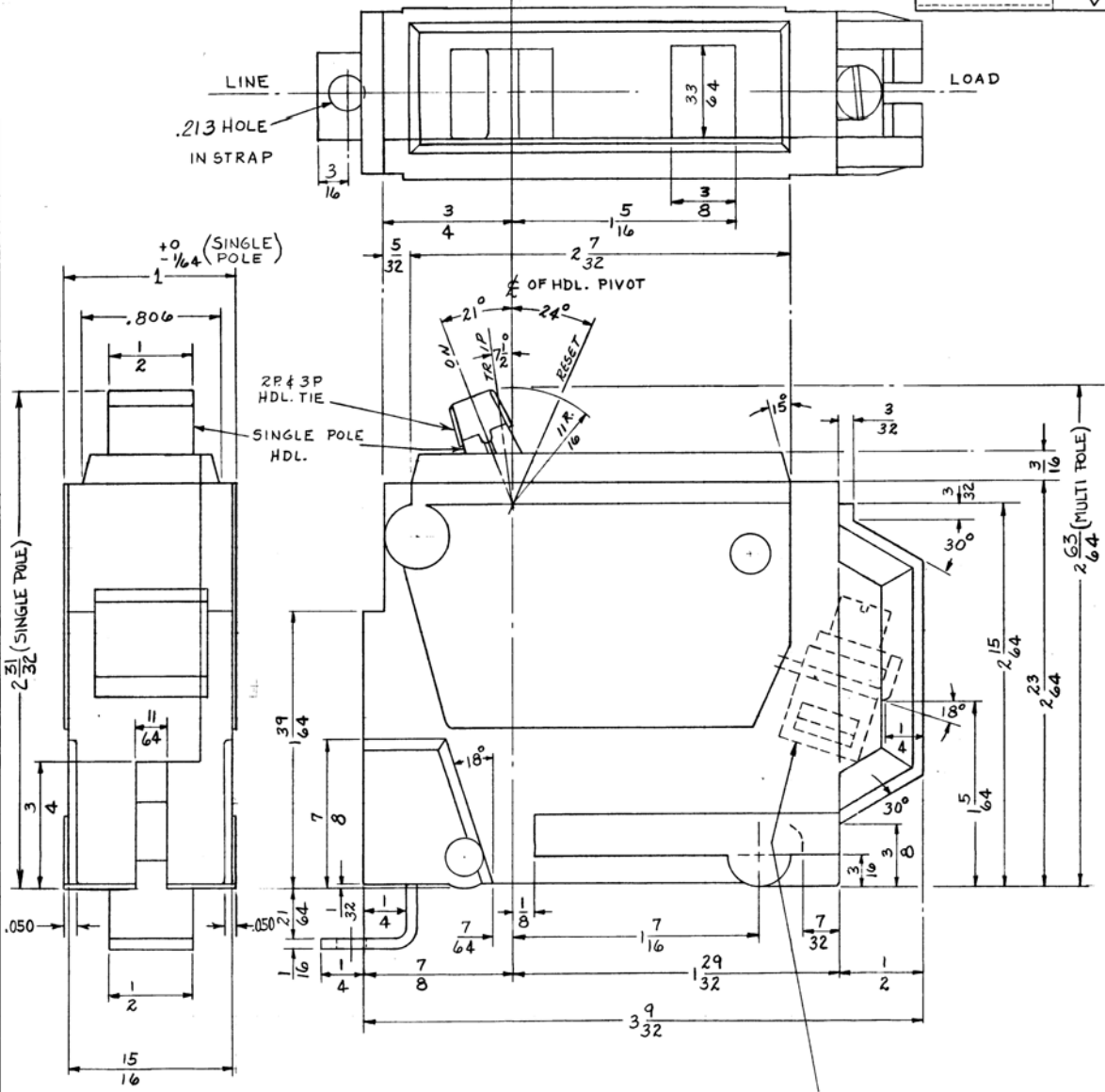
455C873

UNLESS OTHERWISE SPECIFIED USE THE FOLLOWING—

APPLIED PRACTICES	SURFACES	TOLERANCES ON MACHINED DIMENSIONS		
		FRACTIONS	DECIMALS	ANGLES
	✓	+ $\frac{1}{64}$	±.005	±

TITLE OUTLINE  
**TQB CIRCUIT BREAKER**  
 FIRST MADE FOR TQB1115

A  
B  
C  
D  
E



LUG WIRE SIZE  
 70A. TO 100A. # 6 CU. # 4 AL. TO 1/2 CU-AL.  
 15A. TO 60A. # 14 CU. # 12 AL. TO # 3 CU. # 2 AL.

5

455C873  
ON NO. 133ND NO. 1ND1

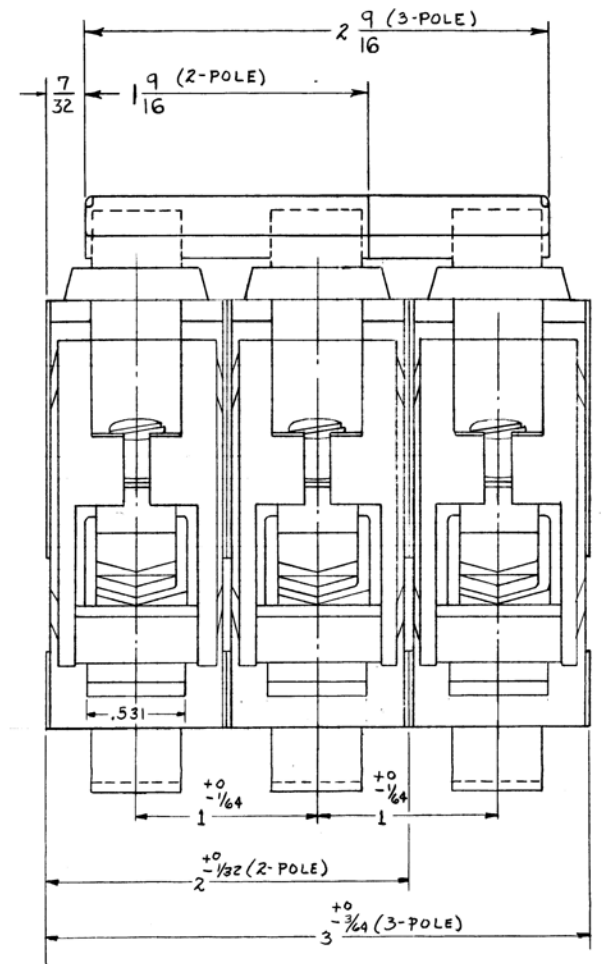
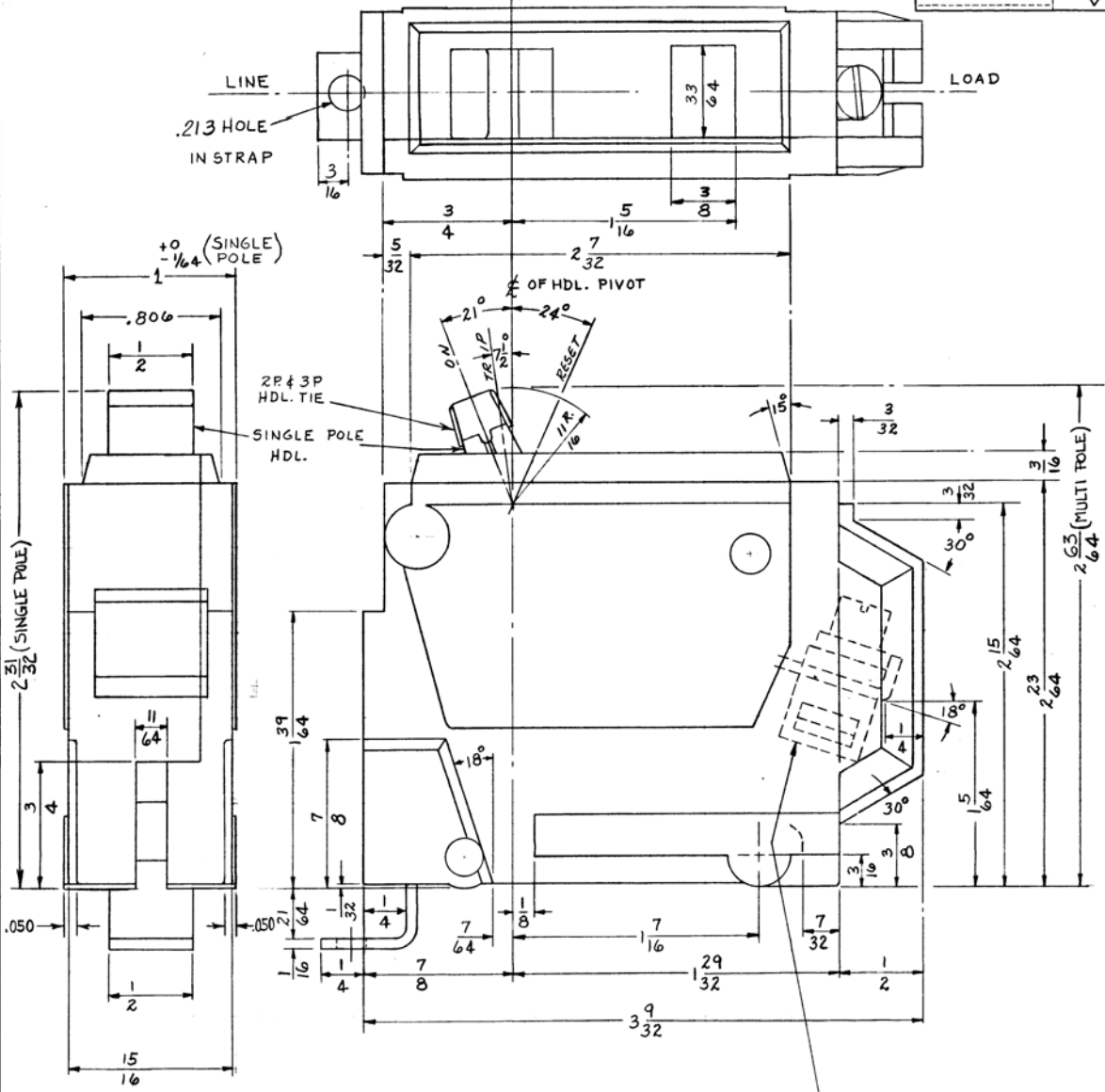
GENERAL ELECTRIC  
 455C873  
CONT. ON SHEET 2 SH. NO. 1

UNLESS OTHERWISE SPECIFIED USE THE FOLLOWING—

APPLIED PRACTICES	SURFACES	TOLERANCES ON MACHINED DIMENSIONS		
		FRACTIONS	DECIMALS	ANGLES
	✓	+ 1/64	± .005	±

TITLE **OUTLINE**  
**TQB CIRCUIT BREAKER**  
 FIRST MADE FOR TQB1115

A  
B  
C  
D  
E



LUG WIRE SIZE  
 70A. TO 100A. # 6 CU. # 4 AL. TO 1/2 CU-AL.  
 15A. TO 60A. # 14 CU. # 12 AL. TO # 3 CU. # 2 AL.

5

REV NO.  
 1