

Catalog Number System

For illustrative purposes only.

T H QL 1 1 15						
GE Identification	Interrupting Rating	Type	Poles	Voltage	Ampere Rating	Insert for Specials
	H = 10kAIC HH = 22kAIC X = 65kAIC	QL = 1" Plug-in QP = ½" Plug-In QB = 1" Bolt-on		1 = 120/240Vac 2 = 240V Omit for THQP breakers (all 120/240Vac)		GF = 1 pole GFCI GF1 = 2-pole GFCI AF = AFCI

Circuit Breaker Selection Guide

Recommendations based on standard conditions. Installation must conform to all local and national codes.

Application					Selection	
Appliance	Average Watts	Volts	Amps	Wire Size	Recommended Circuit Breaker	
					½-inch	1-inch
Air Conditioner Up to 11,000 BTU Up to 23,000 BTU Up to 30,000 BTU	1200	120	20A	2#12	THQP120	THQL1120
	2400	240	20A	3#12	THQP220	THQL2120
	7200	240	30A	3#10	THQP230	THQL2130
Attic Fan Up to ½ HP Up to 1 HP		120	15A	2#14	THQP115	THQL1115
		120	20A	2#12	THQP120	THQL1120
Bathroom or Outdoor Receptacles	1400	120	15A	2#14	—	THQL1115GF
	1900	120	20A	2#12	—	THQL1120GF
Bedroom Receptacles (for maximum safety; required by 2002 NEC)	1400	120	15A	2#14	—	THQL1115AF
	1900	120	20A	2#12	—	THQL1120AF
Branch Circuits (Indoor Receptacles)	1400	120	15A	2#14	THQP115	THQL1115
	1900	120	20A	2#12	THQP120	THQL1120
Clothes Dryer	5000	240	30A	3#10	THQP230	THQL2130
Dishwasher	1800	120	20A	2#12	THQP120	THQL1120
Doorbell Transformer	500	120	15A	2#14	THQP115	THQL1115
Electric Heater	1650	120	20A	2#12	THQP120	THQL1120
Electric Range	10000	240	50A	3#6	THQP250	THQL2150
Electric Welder (240V; over 10' away)		240	50A	3#6	THQP250	THQL2150
Fixed Lighting	1200	120	15A	2#14	THQP115	THQL1115
Garbage Disposal	300	120	20A	2#14	THQP120	THQL1120
Hot Tub or Spa		240	40	2#8	—	THQL2140GF1
		240	50	2#8	—	THQL2150GF1
Hot Water Heater	4500	240	30A	2#10	THQP230	THQL2130
Motors (Single Phase) Up to ½ HP ½ to 1 HP 1 to 1 ½ HP 1 ½ to 3 HP		120	15A	2#14	THQP115	THQL1115
		120	20A	2#12	THQP120	THQL1120
		240	15A	2#14	THQP215	THQL2115
		240	30A	2#10	THQP230	THQL2130
Refrigerator or Freezer	350	120	15A	2#14	THQP115	THQL1115
Sump Pump Up to ½ HP ½ to 1 HP		120	15A	2#14	THQP115	THQL1115
		120	20A	2#12	THQP120	THQL1120
Washing Machine	1200	120	15A	2#14	THQP115	THQL1115
Well Pump Up to ½ HP ½ to 1 HP		120	20A	2#12	THQP120	THQL1120
		240	15A	2#14	THQP215	THQL2115
		120	30A	2#10	THQP130	THQL1130
		240	20A	2#12	THQP220	THQL2120
		240	20A	2#8	THQP240	THQL2140

Special Safety Circuit Protection Products

Included among GE's circuit protection products are several that add the extra measure of safety that is increasingly important to today's new home buyers and remodelers. See page 8 for details.

Safety Need	Safety Solution	Amp Rating
Ground fault protection for circuits supplying power to outdoor, bathroom, kitchen, garage and spa area receptacles.	GFCIs (ground fault circuit interrupters)	15-50
Maximum protection against fires through detection and interruption of arcing caused by damaged wire insulation or extension cords. The 2002 NEC will require this protection in bedroom circuits.	AFCIs (arc fault circuit interrupters)	15-20
Whole house protection of sensitive electronic equipment – computers, fax machines, televisions, stereos, VCRs – from electrical surges.	Surge arrester	NA

[HIGHER QUALITY. LOWER INSTALLED COST.] PowerMark Gold™ Load Centers



Packaging features comprehensive selection and application data. Fronts are packed in inner cartons for added protection during shipment and at the job site.

A complete family of meter socket load centers — ring style and ringless, wide and narrow, meter mains, farm panels and more — deliver specialized solutions for special situations.

Main lug load centers offer an economical solution for sub-panels and similar applications. All main lug units 125A and above convert easily to main breaker.

GE's residential load centers reach into commercial applications as well, with riser panels, auxiliary gutters, three-phase units with standard 22kAIC ratings, and all the accessories needed to complete the job.

The PowerMark Gold line includes a wide range of outdoor as well as indoor units.

All PowerMark Gold load centers are designed and built for faster installation and more dependable performance.

- One-piece interior removes and reinstalls easily.
- Full-length neutrals are easier to wire, reducing installation time and cost.
- Minimum 100% neutral terminations.
- Sturdy copper bus and galvanized box increase durability and reliability.
- Combination slotted/Robertson screws speed wiring.
- All holes are rated for 14-4 wire.
- 100% rated split neutral on each side.
- Load centers accept Q Line circuit breakers, including GE's exclusive ½" THQPs.

Accessories & Options

- Door lock & handle
- Equipment ground kits
- Sub-feed & feed-thru lugs
- Front filler plates
- Handle lock & ties
- Hardware kits
- Main breaker retainers
- Neutral kits
- Universal raintight hubs

Catalog Number System

For illustrative purposes only.

		T		M		42		4		20		C		CU		B	
GE Identification	Type	Maximum Number of 1" Spaces	Insert for 3-phase, 4-wire Load Centers		Bus Ampere Rating		Enclosure Type		Insert for PowerMark Gold	Insert for Specials							
	M = Main Breaker L = Main Lug LM = Convertible PL = Main Lug, Thermoplastic Enclosure	4 - 42			10 = 100A 12 = 125A 15 = 150A 20 = 200A 22 = 225A 40 = 40A 60 = 60A 70 = 70A	C = Combination Flush and Surface, Indoor F = Flush S = Surface R = Outdoor		CU = Copper Bus	G or T = Factory Installed Ground Bar B = Bottom Feed Main Breaker FL = Factory installed Feed-thru Lugs D = Optional door for 6-8 circuit indoor panels. (Doors are standard on all other units.)								

Load Center Selection Guide

(For details on these and other load centers, see the selection tables on the following pages.)

Main Breaker Load Centers										
Main Amp Rating	Max. Branch Breaker Rating (Amps)		Maximum Spaces					Cat. No.		
	Cu	Al	1" THQL		½" THQP		Total 1-pole Spaces	Base Cat. No.①	Suffix 1②	Suffix 2③
			1-pole	2-pole	1-pole	2-pole				
60	60	60	4	2	8	4	8	TM860	F,S	CUGEN
100	100	100	12	6	24	10	24	TM1210	C,R	CU
			20	10	—	—	20	TM2010	C,R	CU
			32	16	—	—	32	TM3210	C	CU
125	125	125	24	12	—	—	24	TM2412	C,R	CU
			12	6	24	10	24	TM1212	C,R	CU
			16	8	16	6	24	TM1612	C	CU
150	150	150	8	4	16	6	16	TM815	R	CUFL
			24	12	20	6	30	TM2415	C,R	CU
			32	16	—	—	32	TM3215	C,R	CU
			16	8	32	14	32	TM1615	C,R	CU
200	200	175	8	4	16	6	16	TM820	R	CUFL
			16	8	32	16	32	TM1620	C	CU
			20	10	40	20	40	TM2020	C,R	CU
			32	16	16	6	40	TM3220	C,R	CU
			40	20	—	—	40	TM4020	C,R	CU

Convertible Load Centers										
Main Amp Rating	Max. Branch Breaker Rating (Amps)		Maximum Spaces					Cat. No.		
	Cu	Al	1" THQL		½" THQP		Total 1-pole Spaces	Base Cat. No.①	Suffix 1②	Suffix 2③
			1-pole	2-pole	1-pole	2-pole				
100	70	55	6	3	12	4	12	TLM612	S,F	CU, D
			8	4	16	6	16	TLM812	S,F	CU, D
125	125	125	24	12	—	—	24	TLM2412	C,R	CU
			12	6	24	10	24	TLM1212	C,R	CU
			16	8	12	6	24	TLM1612	C	CU
150	150	150	20	10	—	—	20	TLM2015	C	CU
			24	12	12	6	30	TLM2415	C,R	CU
200	200	175	16	8	32	14	32	TLM1620	C,R	CU
			20	10	40	18	40	TLM2020	C,R	CU
			32	16	16	6	40	TLM3220	C	CU
			40	20	—	—	40	TLM4020	C,R	CU

Main Lug Load Centers										
Main Amp Rating	Max. Branch Breaker Rating (Amps)		Maximum Spaces					Cat. No.		
	Cu	Al	1" THQL		½" THQP		Total 1-pole Spaces	Base Cat. No.①	Suffix 1②	Suffix 2③
			1-pole	2-pole	1-pole	2-pole				
40	40	40	2	1	4	1	4	TL240	C,R	CU
70	70	60	2	1	4	1	4	TL270	C,R	CU
125	70	55	4	2	8	3	8	TPL412	C,R	—
			4	2	8	3	8	TL412	C, R1	—

① Catalog number is constructed by adding Suffix 1 and Suffix 2 to Base Catalog Number.

② F = Flush mount indoor
S = Surface mount
C = Combination flush/surface mount indoor
R, R1 = Outdoor

③ CU = Copper bus
CUFL = Copper bus, feed-thru lugs
CUGEN = Copper bus, generator panel with dual main circuit breakers
D = Optional door for 6- and 8-circuit indoor panels (door standard on outdoor panels)

[SELECTION TABLES.] PowerMark Gold™ & Plus™ Load Centers

- UL Listed (Panelboards No. 67)
- 60°C/75°C Conductor Rating
- Indoor Fronts Combination Surface/Flush
- Suitable for Use as Service Entrance Equipment When Installed in Accordance with the National Electrical Code
- 22kAIC RMS Symmetrical, Except Where Noted

Main Lug & Convertible Load Centers

Single-phase, Three-wire, 120/240 Volts ac, Top Feed^①

Factory Installed Main Lugs (TLM units convertible to main breaker)

PowerMark Plus catalog numbers shown in italics

Main Ampere Rating	Maximum Spaces					Indoor Type 1 Enclosure ^{②③}		Outdoor Type 3R Enclosure ^③		Main Wire Size AWG/ kcmil Cu-Al	Equipment Ground Kit
	1" THQL		½" THQP		Total 1-pole Spaces	Cat. No.	Box No. See Page 24	Cat. No.	Box No. See Page 25		Order Separately See Page 16
	1p	2p	1p	2p						Cat. No.	Box No. See Page 25
40	2	1	4	1	4	TL240SCU ^④	1A	TL240RCU	R1A	14-4	TGK4
70	2	1	4	1	4	TL270SCU ^④	1A	TL270RCU	R1A	6-3	TGK4
125	4	2	8	3	8	<i>TL412C</i> ^⑤	2A	<i>TL412R1</i> ^⑥	R1A	1-2/0	TGL1
	4	2	8	3	8	<i>TL412CT</i> ^{⑤⑦}	2A	<i>TL412RT1</i> ^⑥	R1A		TGL1 Installed
	4	2	8	3	8	—	—	<i>TL412R2</i> ^⑥	R1B		TGL1
	4	2	8	3	8	<i>TPL412C</i> ^{⑤⑦}	2	<i>TPL412R</i> ^{⑥⑦}	R1		TGL1
	4	2	8	3	8	<i>TPL412CT</i> ^⑤	2	<i>TPL412RT</i> ^{⑥⑧}	R1		TGL1 Installed
	6	3	12	6	12	TLM612FCU, SCU ^⑨	3B, 3A	TLM612RCU ^⑩	R2A	6-3	TGK12
	8	4	16	8	16	TLM812FCU, SCU ^{⑨⑩}	3B, 3A	TLM812RCU ^⑩	R2A		TGK12
	12	6	24	10	24	TLM1212CCU ^⑪	4	TLM1212RCU ^⑪	R3	6-2/0	TGL2
	12	6	24	10	24	TLM1212CCUG ^⑪	4	—	—		TGK24 Installed
	16	8	16	6	24	TLM1612CCU ^⑪	4	—	—		TGK12 or TGK24
24	12	—	—	24	TLM2412CCU ^⑪	7	TLM2412RCU ^⑪	R4	TGK12 or TGK24		
150	20	10	20	8	30	TLM2015CCU	8	—	—		1-3/0 (Cu) 2-3/0 (Al)
24	12	12	4	30	TLM2415CCU	9	TLM2415RCU	R6	TGK24 or TGK32		
200	12	6	24	10	24	—	—	TLM1220RCU	R5	1-250 (Cu) 2/0-250 (Al)	TGK24
	16	8	32	14	32	TLM1620CCU	8	TLM1620RCU	R5		TGK32
	16	8	32	16	32	TLM1620CCUG	8	—	—		TGK32 Installed
	20	10	40	18	40	TLM2020CCU	9	TLM2020RCU	R6		TGK24 or TGK42
	20	10	40	18	40	TLM2020CCUG	9	—	—		TGK42 Installed
	32	16	16	6	40	TLM3220CCU	12	—	—		TGK32
40	20	—	—	40	TLM4020CCU	13	TLM4020RCU	R8	TGK42		
225	42	20	—	—	42	TLM4222CCU	14	TLM4222RCU	R8	1-300 (Cu) 2/0-300 (Al)	TGK42
400	24	20	—	—	24	<i>TL2440FS</i>	16	<i>TL2440R</i>	R9	(2) 2/0-250	(2) TGL2
	42	20	—	—	42	<i>TL4240FS</i> ^⑫	16	<i>TL4240R</i> ^⑫	R9		(2) TGL2
600	42	20	—	—	42	<i>TL4260FS</i> ^⑫	17	<i>TL4260R</i> ^⑫	R9	(2) 250-350 (Cu) (2) 350-500 (Al)	(2) TGL2

① 6-42 circuit devices UL Listed for bottom mounted lugs by installing complete unit (box, interior and front) upside down. For bottom feed door handle, see page 17.
 ② 40-225 amp single-phase devices have removable closing caps. Larger ampere devices require field-cut openings. Order hubs separately (see page 17).
 ③ TPL load center enclosures are thermoplastic; TL and TLM load center enclosures are galvanized steel.
 ④ No door.
 ⑤ No door, 10kAIC.
 ⑥ 10 kAIC.
 ⑦ Maximum branch or main circuit breaker rating: 90 amp with Cu, 70 amp with Al.
 ⑧ 125 amp maximum branch capacity.
 ⑨ FCU indicates flush mount enclosure; SCU indicates surface mount enclosure. Add D to catalog number for optional door (example: TLM612SCUD).
 ⑩ For main breaker, order THQLRK2 retainer kit plus 2-pole circuit breaker. See page 17.
 ⑪ For main breaker, order TQMH000. Also order 2-pole THQL, THHQL or TXQL circuit breaker. See page 16.
 ⑫ Not suitable for use as service entrance equipment.

[SELECTION TABLES.] Commercial Load Centers

Three-phase, Four-wire, 208Y/120 Volts ac^①, Top Feed^②

Factory Installed Main Lugs

PowerMark Plus Load Centers

Main Ampere Rating	Maximum Spaces				Indoor Type 1 Enclosure		Outdoor Type 3R Enclosure ^③		Main Wire Size AWG/kcmil Cu/Al	Equipment Ground Kit Order Separately See Page 16 Cat. No.
	1" THQL			Total 1-pole Spaces	Cat. No.	Box No. See Page 24	Cat. No.	Box No. See Page 25		
	1-pole	2-pole	3-pole ^④							
125	12	6	4	12	TL12412C	4	TL12412R	R3	6-2/0	TGL2
	18	8	6	18	TL18415C	6	TL18415R	R4	1-3/0 Cu or 2/0-3/0 Al	TGL2+ TGL3 (2)TGL2
150	24	12	8	24	TL24415C	7	TL24415R	R4		
	18	8	6	18	TL18420C	7	TL18420R	R4	1-250 Cu or 2/0-250 Al	TGL2+ TGL3 (2)TGL2
200	30	14	10	30	TL30420C	10	TL30420R	R6		
	42	20	14	42	TL42420C ^⑤	13	TL42420R ^⑤	R8		
225	30	14	10	30	TL30422C ^⑤	15	—	—	1-300 Cu or 2/0-300 Al	(2)TGL2
	42	20	14	42	TL42422C ^⑤	15	TL42422R ^⑤	R8		(2)TGL2
400	24	12	8	24	TL24440F,S	16	TL24440R	R9	(2)2/0-250	(2)TGL2
	42	20	14	42	TL24440F,S ^⑤	16	TL42440R ^⑤	R9		(2)TGL2
600	42	20	14	42	TL42460F,S ^⑤	17	TL42460R ^⑤	R9	(2)250-350 Cu or (2)350-500 Al	(2)TGL2

- ① Also UL Listed for 3-phase 4-wire 240/120 volts ac delta and 3-phase 3-wire 240 volts ac branch breakers installed.
- ② 6-42 circuit indoor devices UL Listed for bottom mounted lugs by installing complete unit (box, interior and front) upside down. For bottom feed door handle, see page 17.
- ③ 40-225 Amp 1 phase and 125-200 Amp 3 phase devices have removable closing cap. Larger Ampere devices require field cut openings. Order hubs separately. See page 17.
- ④ Three pole plug-in breakers available through 100 Amps.
- ⑤ Not suitable for use as service entrance equipment.

Three-phase, Four-wire, 208Y/120 Volts ac^①, Top Feed^②

Factory Installed Main Breaker

22kAIC RMS Symmetrical

PowerMark Plus Load Centers

Main Ampere Rating	Maximum Spaces				Indoor Type 1 Enclosure		Outdoor Type 3R Enclosure ^③		Main Wire Size AWG/kcmil Cu/Al	Equipment Ground Kit Order Separately See Page 16 Cat. No.
	1" THQL			Total 1-pole Spaces	Cat. No.	Box No. See Page 24	Cat. No.	Box No. See Page 25		
	1-pole	2-pole	3-pole ^④							
100	12	6	4	12	TM12410C	6	—	—	6-1/0 Cu or 4-1/0 Al	TGL2
	18	8	6	18	TM18410C	6	TM18410R	R4		TGL2+TGL3
125	30	14	10	30	TM30412C	11	TM30412R	R7	1-3/0 Cu or 2/0-3/0 Al	(2)TGL2
	24	12	8	24	TM24415C	10	TM24415R	R6		(2)TGL2
150	30	14	10	30	TM30415C	11	TM30415R	R7	1-3/0 Cu or 2/0-3/0 Al	(2)TGL2
	42	20	14	42	TM42415C	13	—	—		(2)TGL2
200	24	12	8	24	TM24420C	10	—	R6	1-300MCM Cu or 2/0-300MCM Al	(2)TGL2
	30	14	10	30	TM30420C	12	TM30420R	R7	1-250 Cu or 2/0-250 Al	(2)TGL2
	42	20	14	42	TM42420C	14	TM42420R	R8		(2)TGL2
225	42	20	14	42	TM42422C	15	TM42422R	R8	1-300 Cu or 2/0-300 Al	(2)TGL2
300	42	20	14	42	TM42430F,S	17	—	—	(1)6-600 or (2)2/0-250	(2)TGL2
400	42	20	14	42	TM42440F,S	17	TM42440R	R11	(1)6-600 or (2)2/0-250	(2)TGL2

- ① Also UL Listed for 3-phase 4-wire 240/120 volts ac delta and 3-phase 3-wire 240 volts ac branch breakers installed.
- ② 150-400 Amp 1 phase and 125-200 Amp 3 phase indoor devices available with main breaker bottom mounted at same list price. Add "B" suffix to catalog number, e.g. TM24420CB. UL Listed.
- ③ 100-225 Amp 1 phase and 100-200 Amp 3 phase devices have removable closing cap. Larger Ampere devices require field cut openings. Order hubs separately. See page 17.
- ④ Three pole plug-in breakers available through 100 Amps.

Riser Panels

22kAIC RMS Symmetrical

Main Ampere Rating	Maximum Spaces				Indoor Type 1 Enclosure		Main Wire Size AWG/ kcmil Cu-Al	Equipment Ground Kit Order Separately See Page 16 Cat. No.
	1" THQL		½" THQP		Cat. No.	Box No. See Page 24		
	1p	2p	1p	2p				
125	12	6	24	10	24	TLM1212CCURP	4A	TGK12 or TGK24
	20	10	—	—	20	TLM2012CCURP	9A	TGK12 or TGK24

Commercial Load Center Accessories

Accessory	Description	Cat. No.
Feed-thru Lugs ^①	3-pole, 225A, Plug-in ^②	THLK3225
Auxiliary Gutter Enclosures	24"	TMAGB24
	28"	TMAGB28
	33"	TMAGB33
	39"	TMAGB39
	43"	TMAGB43
Gutter Tap Kits ^④	43" deep	TMAGB43D
	250 MCM Lugs	TMGT250
	500 MCM Lugs	TMGT500
	750 MCM Lugs ^③	TMGT750

- ① For use with three-phase load centers.
- ② 22kAIC RMS symmetrical.
- ③ Not for use with riser panels.
- ④ One tap kit per phase required.

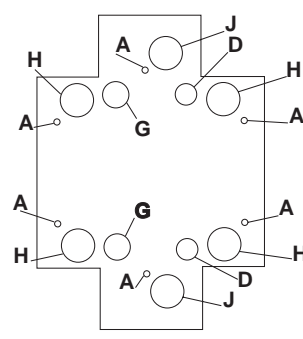
[DIMENSIONS AND KNOCKOUTS.] PowerMark Gold™ & Plus™ Load Centers
Indoor Enclosures

Dimensions (in inches)

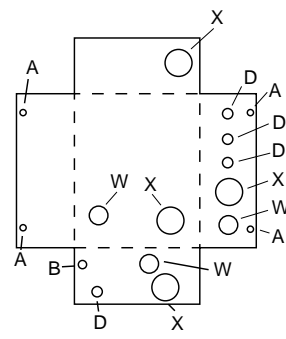
Box No.	Width	Height	Depth
1A	5 1/8	10 1/8	3 3/8
2	7 1/2	9 7/8	3 7/8
2A	7 1/4	9	3
3A	11 1/8	11 3/8	3 3/8
3B	12 3/8	12 3/8	3 3/8
4	14	19	3 3/8
4A	14	19	3 3/8
6	14	23	3 3/8
7	14	24 1/8	3 3/8
8	14	26 1/8	3 3/8
9	14	28 1/8	3 3/8
9A	14	28 1/8	3 3/8
10	14	30 1/8	3 3/8
11	14	33 1/8	3 3/8
12	14	35 1/8	3 3/8
13	14	39 1/8	3 3/8
14	14	43 1/8	3 3/8
15	14	43 1/8	4 3/8
16	16	45 1/8	5 1/8
17	20	59 1/8	6 7/8

Knockouts

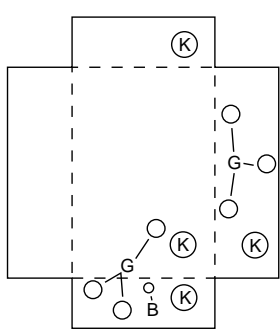
Symbol	A	•	B	C	D	E	F	G	H	J	K	L	M	N	P	Q	R	S	T	U	V	W	X	Y	Z	
Conduit Size in Inches	1/8	—	—	—	—	—	—	—	—	—	—	—	—	—	—	—	—	—	—	—	—	—	—	—	—	
	1/4	—	—	—	—	—	—	—	—	—	—	—	—	—	—	—	—	—	—	—	—	—	—	—	—	
	3/8	—	—	—	—	—	—	—	—	—	—	—	—	—	—	—	—	—	—	—	—	—	—	—	—	
	1/2	—	—	—	—	—	—	—	—	—	—	—	—	—	—	—	—	—	—	—	—	—	—	—	—	
	5/8	—	—	—	—	—	—	—	—	—	—	—	—	—	—	—	—	—	—	—	—	—	—	—	—	
	3/4	—	—	—	—	—	—	—	—	—	—	—	—	—	—	—	—	—	—	—	—	—	—	—	—	
	1	—	—	—	—	—	—	—	—	—	—	—	—	—	—	—	—	—	—	—	—	—	—	—	—	—
	1 1/8	—	—	—	—	—	—	—	—	—	—	—	—	—	—	—	—	—	—	—	—	—	—	—	—	—
	1 1/4	—	—	—	—	—	—	—	—	—	—	—	—	—	—	—	—	—	—	—	—	—	—	—	—	—
	1 1/2	—	—	—	—	—	—	—	—	—	—	—	—	—	—	—	—	—	—	—	—	—	—	—	—	—



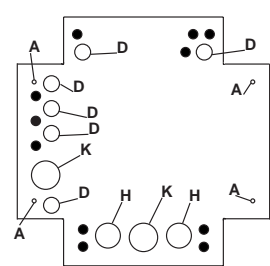
Box1A



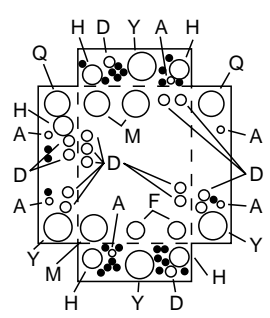
Box2



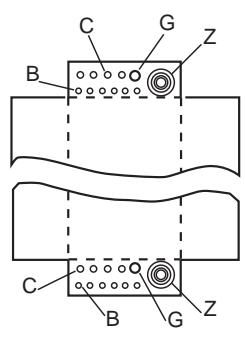
Box2A



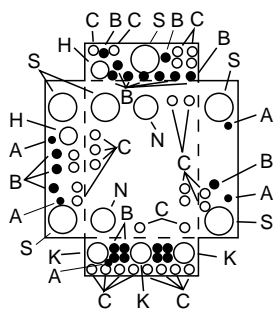
Box3A, 3B



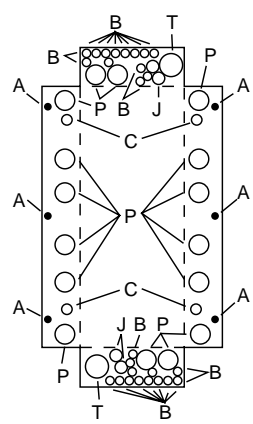
Box4, 6, 7, 8, 9, 10, 11, 12, 13, 14



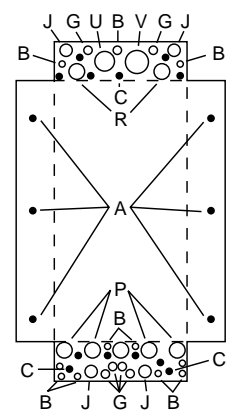
Box4A, 9A



Box15



Box16



Box17