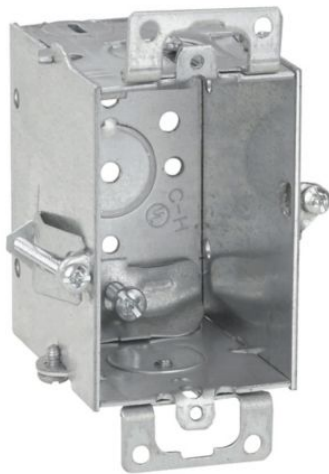


# Eaton TP163

Catalog Number: TP163

Eaton Crouse-Hinds series Switch Box, (1) 1/2", Hold-Tite, 2, NM clamps, 2-1/2", Steel, Ears, Gangable, 12.5 cubic inch capacity



## General specifications

Product Name	Catalog Number
Eaton Crouse-Hinds series switch box	TP163
UPC	Product Length/Depth
786189101638	2 in
Product Height	Product Width
3 in	2.5 in
Product Weight	
0.65 lb	

## Certifications and compliances

### Area classification

Ordinary/Non-Hazardous Locations

### Standards type

NEC/CEC

## Product specifications

### Depth

2-1/2"

### Type

Gangable

### Capacity

12.5 cubic in

### Conduit/cable

NM clamps

### Bracket style

Hold-Tite

### Bottom Knockouts

(1) 1/2 in

### Cable knockouts

2

### Material

Steel

### Special features

Ears

## Resources

### Catalogs

[Crouse-Hinds series Steel Switch Boxes catalog page](#)

### Certification reports

[Steel Switch Boxes Canadian certification](#)

[Steel Switch Boxes UL certification](#)

### Specifications and datasheets

[Eaton Specification Sheet - TP163](#)

[Steel Outlet Boxes for Electrical Systems](#)



Eaton Corporation plc  
Eaton House  
30 Pembroke Road  
Dublin 4, Ireland  
Eaton.com  
© 2025 Eaton. All Rights Reserved.

Eaton is a registered trademark.

All other trademarks are property of their respective owners.

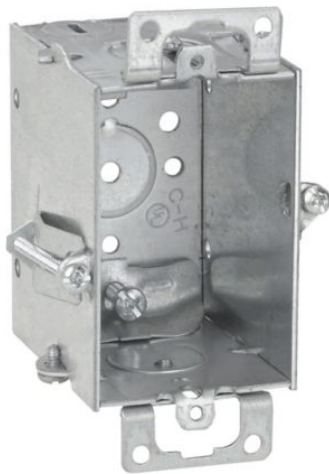


[Eaton.com/socialmedia](https://www.eaton.com/socialmedia)

# Eaton TP163

Catalog Number: TP163

Eaton Crouse-Hinds series Switch Box, (1) 1/2", Hold-Tite, 2, NM clamps, 2-1/2", Steel, Ears, Gangable, 12.5 cubic inch capacity



## General specifications

Product Name	Catalog Number
Eaton Crouse-Hinds series switch box	TP163
UPC	Product Length/Depth
786189101638	2 in
Product Height	Product Width
3 in	2.5 in
Product Weight	
0.65 lb	

## Certifications and compliances

### Area classification

Ordinary/Non-Hazardous Locations

### Standards type

NEC/CEC

## Product specifications

### Depth

2-1/2"

### Type

Gangable

### Capacity

12.5 cubic in

### Conduit/cable

NM clamps

### Bracket style

Hold-Tite

### Bottom Knockouts

(1) 1/2 in

### Cable knockouts

2

### Material

Steel

### Special features

Ears

## Resources

### Catalogs

[Crouse-Hinds series Steel Switch Boxes catalog page](#)

### Certification reports

[Steel Switch Boxes Canadian certification](#)

[Steel Switch Boxes UL certification](#)

### Specifications and datasheets

[Eaton Specification Sheet - TP163](#)

[Steel Outlet Boxes for Electrical Systems](#)



Eaton Corporation plc  
Eaton House  
30 Pembroke Road  
Dublin 4, Ireland  
Eaton.com  
© 2025 Eaton. All Rights Reserved.

Eaton is a registered trademark.

All other trademarks are property of their respective owners.



[Eaton.com/socialmedia](https://www.eaton.com/socialmedia)