

Steel Box Accessories

GROUNDING SCREW & PIGTAIL



TP711



TP701



TP704



TP704BULK

| Cat. # | Description | Std. Pkg. | Unit Qty. | Wt. Lbs. Per 100 |
|-----------|--|-----------|-----------|------------------|
| TP701 | Grounding Screw with 8" Insulated No. 12 Stranded Wire | 1000 | 1000 | 2.0 |
| TP711 | Grounding Screw with 8" Insulated No. 12 Copper Wire | 1000 | 1000 | 2.0 |
| TP704 | #10-32 x 3/8" Grounding Screw | 1000 | 1000 | 0.5 |
| TP704BULK | #10-32 x 3/8" Grounding Screws in Jar | 1000 | 1000 | 0.4 |

LOW PROFILE MOUNTING & DRILLING & TAPPING SCREWS



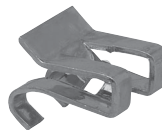
TP710



STS8BULK

| Cat. # | Description | Unit Qty. | Wt. Lbs. Per 100 |
|---|----------------------------------|-----------|------------------|
| Low Profile Screws – Reduces Risk of Sheetrock Bulge | | | |
| TP710 | #8 x 1/2" L.P. Screws | 1000 | 0.5 |
| STS8BULK | #8 x 1/2" Self-tapping Screw Jar | 1000 | 0.4 |

GROUNDING CLIP



TP706

| Cat. # | Description | Std. Pkg. | Unit Qty. | Wt. Lbs. Per 100 |
|--------|---|-----------|-----------|------------------|
| TP706 | For Grounding Switch and Outlet Boxes Using Non-metallic Sheathed Cables No. 14 and No. 12, with Grounding Wire | 1000 | 100 | 0.5 |

OLD WORK CLIP



TP651

| Cat. # | Description | Std. Pkg. | Unit Qty. | Wt. Lbs. Per 100 |
|--------|--|-----------|-----------|------------------|
| TP651 | Clips Lock Old Work Steel Switch Boxes Tightly to Wall; Two Required Per Box | 250 Sets | 25 Sets | 4 |

REPLACEMENT PARTS



TP900



TP901



TP902

| Cat. # | Description | Unit Qty. | Wt. Lbs. Per 100 |
|--------|------------------------------------|-----------|------------------|
| TP900 | MC-BX Clamp with Screws | 200 | 17.3 |
| TP901 | One Screw Mounting Ear with Screws | 200 | 3.2 |
| TP902 | Two Screw Mounting Ear with Screws | 200 | 2.7 |

Steel Box Accessories

HOLD-IT SWITCH BOX SUPPORTS

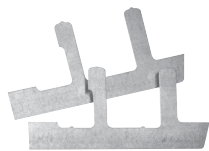


FIG. 1

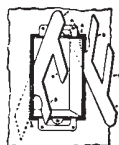


FIG. 2

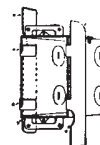


FIG. 3

| Cat. # | Description | Unit Qty. | Wt. Lbs. Per 100 |
|--------|---|-----------|------------------|
| TP708 | Two Metal Holders for Mounting Old Work Switch Boxes in All Types of Wall Materials | 500 Sets | 5 |

SWITCH BOX EXTENSIONS



TP709

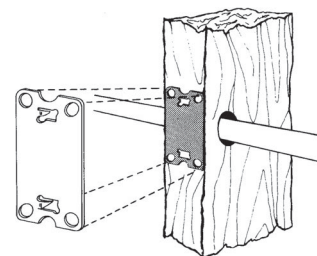
| Cat. # | Description | Capacity Cu. In. | Unit Qty. | Wt. Lbs. Per 100 |
|--------|--|------------------|-----------|------------------|
| TP709* | Fits Snugly Inside All 3" x 2" Width Boxes; Maximum Adjustable Depth 0.78"; Furnished with Mounting Screws | 3.5 | 50 | 13 |

*Not UL Listed.

STEEL STUD SAFETY PLATES

Features:

- Meets requirement of National Electric Code®
- Same size as face of stud
- No nails required
- Protects electrical cable and copper water pipes



| Cat. # | Description | Unit Qty. | Wt. Lbs. Per 100 |
|--------|-------------------------|-----------|------------------|
| TP659 | 2" x 3 1/8" Steel Plate | 100 | 11 |

"BACK TO BACK" BOX CONNECTORS – ZINC DIE CAST

Applications:

- For use as a short raceway between two boxes
- Width 1.00"; length 1.12"



| Cat. # | Size | Unit Qty. | Wt. Lbs. Per 100 |
|--------|------|-----------|------------------|
| 5050 | 1/2" | 25 | 8 |

Steel Boxes

Steel Box Accessories

GROUNDING SCREW & PIGTAIL



TP711



TP701



TP704



TP704BULK

| Cat. # | Description | Std. Pkg. | Unit Qty. | Wt. Lbs. Per 100 |
|-----------|--|-----------|-----------|------------------|
| TP701 | Grounding Screw with 8" Insulated No. 12 Stranded Wire | 1000 | 1000 | 2.0 |
| TP711 | Grounding Screw with 8" Insulated No. 12 Copper Wire | 1000 | 1000 | 2.0 |
| TP704 | #10-32 x 3/8" Grounding Screw | 1000 | 1000 | 0.5 |
| TP704BULK | #10-32 x 3/8" Grounding Screws in Jar | 1000 | 1000 | 0.4 |

LOW PROFILE MOUNTING & DRILLING & TAPPING SCREWS



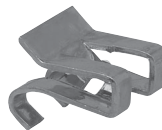
TP710



STS8BULK

| Cat. # | Description | Unit Qty. | Wt. Lbs. Per 100 |
|---|----------------------------------|-----------|------------------|
| Low Profile Screws – Reduces Risk of Sheetrock Bulge | | | |
| TP710 | #8 x 1/2" L.P. Screws | 1000 | 0.5 |
| STS8BULK | #8 x 1/2" Self-tapping Screw Jar | 1000 | 0.4 |

GROUNDING CLIP



TP706

| Cat. # | Description | Std. Pkg. | Unit Qty. | Wt. Lbs. Per 100 |
|--------|---|-----------|-----------|------------------|
| TP706 | For Grounding Switch and Outlet Boxes Using Non-metallic Sheathed Cables No. 14 and No. 12, with Grounding Wire | 1000 | 100 | 0.5 |

OLD WORK CLIP



TP651

| Cat. # | Description | Std. Pkg. | Unit Qty. | Wt. Lbs. Per 100 |
|--------|--|-----------|-----------|------------------|
| TP651 | Clips Lock Old Work Steel Switch Boxes Tightly to Wall; Two Required Per Box | 250 Sets | 25 Sets | 4 |

REPLACEMENT PARTS



TP900



TP901



TP902

| Cat. # | Description | Unit Qty. | Wt. Lbs. Per 100 |
|--------|------------------------------------|-----------|------------------|
| TP900 | MC-BX Clamp with Screws | 200 | 17.3 |
| TP901 | One Screw Mounting Ear with Screws | 200 | 3.2 |
| TP902 | Two Screw Mounting Ear with Screws | 200 | 2.7 |

Steel Box Accessories

HOLD-IT SWITCH BOX SUPPORTS

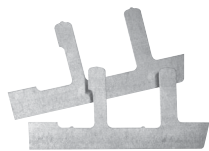


FIG. 1

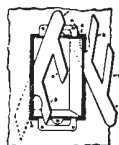


FIG. 2

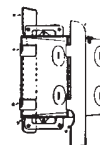


FIG. 3

| Cat. # | Description | Unit Qty. | Wt. Lbs. Per 100 |
|--------|---|-----------|------------------|
| TP708 | Two Metal Holders for Mounting Old Work Switch Boxes in All Types of Wall Materials | 500 Sets | 5 |

SWITCH BOX EXTENSIONS



TP709

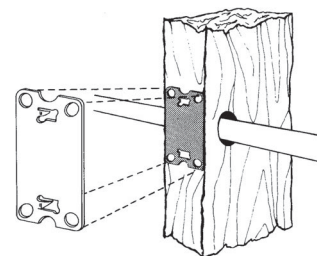
| Cat. # | Description | Capacity Cu. In. | Unit Qty. | Wt. Lbs. Per 100 |
|--------|--|------------------|-----------|------------------|
| TP709* | Fits Snugly Inside All 3" x 2" Width Boxes; Maximum Adjustable Depth 0.78"; Furnished with Mounting Screws | 3.5 | 50 | 13 |

*Not UL Listed.

STEEL STUD SAFETY PLATES

Features:

- Meets requirement of National Electric Code®
- Same size as face of stud
- No nails required
- Protects electrical cable and copper water pipes



| Cat. # | Description | Unit Qty. | Wt. Lbs. Per 100 |
|--------|-------------------------|-----------|------------------|
| TP659 | 2" x 3 1/8" Steel Plate | 100 | 11 |

"BACK TO BACK" BOX CONNECTORS – ZINC DIE CAST

Applications:

- For use as a short raceway between two boxes
- Width 1.00"; length 1.12"



| Cat. # | Size | Unit Qty. | Wt. Lbs. Per 100 |
|--------|------|-----------|------------------|
| 5050 | 1/2" | 25 | 8 |

Steel Boxes