


## XHHW-2 ALUMINUM CONDUCTOR

**APPLICATION:** KINGWIRE Type XHHW-2 is intended for use as general purpose wiring for up to 600 volt rated services in air conduit or other recognized raceways for services, feeders and branch circuit wiring as specified in the National Electrical Code at a maximum conductor temperature of 90 °C in wet or dry locations.

**PRODUCT FEATURES:** Compact stranded 8000 Series aluminum alloy conductor. Insulation is an abrasion, moisture, heat and sunlight resistant black cross-linked polyethylene. Cable can be installed without pulling lubricant. CT rated available when requested on sizes 1/0 AWG and larger.

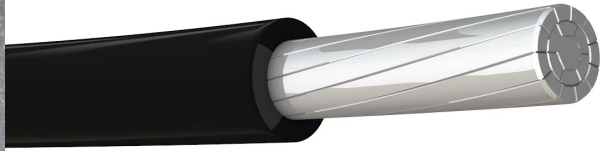
**STANDARDS:**  UL Standard 44 and Federal Specification JC-30B NEC, ASTM B-800, B-801 Compliant to RoHS, Directive 2002/95/EC, ICEA S-95-658, NEMA WC 70

**COLORS:** Sizes 6 to 1 gauge are stocked in Black, White, Red, Blue and Green. Sizes 1/0 to 750MCM stocked in all the above colors plus Brown, Yellow, Orange, Gray, Green and Purple.

KINGWIRE XHHW-2					
Conductor (AWG or MCM)	Stranding	Insulation Thickness (mils)	Outside Diameter (in)	Weight per 1000 ft. (lbs)	Ampacity (amps)* 90° C
6	7/w	45	.260	39	60
4	7/w	45	.305	57	75
2	7/w	45	.360	84	100
1	19/w	55	.415	108	115
1/0	19/w	55	.450	132	135
2/0	19/w	55	.490	161	150
3/0	19/w	55	.540	198	175
4/0	19/w	55	.590	244	205
250	37/w	65	.655	292	230
300	37/w	65	.705	344	255
350	37/w	65	.750	396	280
400	37/w	65	.795	448	305
500	37/w	65	.870	550	350
600	61/w	80	.980	671	385
700	61/w	80	1.040	774	420
750	61/w	80	1.075	824	435
900	61/w	80	1.161	.979	480
1000	61/w	80	1.230	1079	500

1. Data are approximate and subject to normal manufacturing tolerances.
2. Standard lengths are subject to normal manufacturing tolerance of +/- 10%
3. Two, Three or four conductors can be paralleled on a reel.
4. 90°C- XHHW-2 wet or dry locations.


\* To determine correct ampacity by conductor size, please consult the National Electric Code, latest edition.



## XHHW-2 ALUMINUM CONDUCTOR

**APPLICATION:** KINGWIRE Type XHHW-2 is intended for use as general purpose wiring for up to 600 volt rated services in air conduit or other recognized raceways for services, feeders and branch circuit wiring as specified in the National Electrical Code at a maximum conductor temperature of 90 °C in wet or dry locations.

**PRODUCT FEATURES:** Compact stranded 8000 Series aluminum alloy conductor. Insulation is an abrasion, moisture, heat and sunlight resistant black cross-linked polyethylene. Cable can be installed without pulling lubricant. CT rated available when requested on sizes 1/0 AWG and larger.

**STANDARDS:**  UL Standard 44 and Federal Specification JC-30B NEC, ASTM B-800, B-801 Compliant to RoHS, Directive 2002/95/EC, ICEA S-95-658, NEMA WC 70

**COLORS:** Sizes 6 to 1 gauge are stocked in Black, White, Red, Blue and Green. Sizes 1/0 to 750MCM stocked in all the above colors plus Brown, Yellow, Orange, Gray, Green and Purple.

KINGWIRE XHHW-2					
Conductor (AWG or MCM)	Stranding	Insulation Thickness (mls)	Outside Diameter (in)	Weight per 1000 ft. (lbs)	Ampacity (amps)* 90° C
6	7/w	45	.260	39	60
4	7/w	45	.305	57	75
2	7/w	45	.360	84	100
1	19/w	55	.415	108	115
1/0	19/w	55	.450	132	135
2/0	19/w	55	.490	161	150
3/0	19/w	55	.540	198	175
4/0	19/w	55	.590	244	205
250	37/w	65	.655	292	230
300	37/w	65	.705	344	255
350	37/w	65	.750	396	280
400	37/w	65	.795	448	305
500	37/w	65	.870	550	350
600	61/w	80	.980	671	385
700	61/w	80	1.040	774	420
750	61/w	80	1.075	824	435
900	61/w	80	1.161	.979	480
1000	61/w	80	1.230	1079	500

1. Data are approximate and subject to normal manufacturing tolerances.
2. Standard lengths are subject to normal manufacturing tolerance of +/- 10%
3. Two, Three or four conductors can be paralleled on a reel.
4. 90°C- XHHW-2 wet or dry locations.

\* To determine correct ampacity by conductor size, please consult the National Electric Code, latest edition.