

Recessed Power/Low Voltage TV Box™

NEW!
more on reverse

For Flush-to-the-Wall Mounting of Flat Screen TVs



2-GANG TVBU505
on Stud
in New
Construction



2-GANG TVBU505
in Retrofit

Two-Gang Power/Low Voltage Box for New Work or Retrofit



2-GANG TVBU505
(with CED130 cable entry device)



2-GANG TVBU505

Arlington's recessed TVBU505 non-metallic combination power and low voltage TV BOX™ is the secure, easy way to mount a flat screen TV flush against a wall. It features power in *one side*; low voltage in *the other* for Class 2 wiring of satellite or cable TV, speakers and more.

The job looks great! Plugs and connectors stay inside this two-gang box, without extending past the wall.

- Non-metallic box with paintable white trim plate
- Easy to install, secure installation in walls up to 1-1/2" thick
- Mounting wings hold box securely against the wall in retrofit projects
- Boxes screw-mount to stud in new construction
- Optional covers available for unused boxes
- Accommodates Arlington's SCOOP™ series entrance plates and hoods
- Other styles available:
 - Steel boxes with plastic trim plate
 - Non-metallic boxes with ground clip (Canada)
- cULus Listed



Scan for details.



Arlington

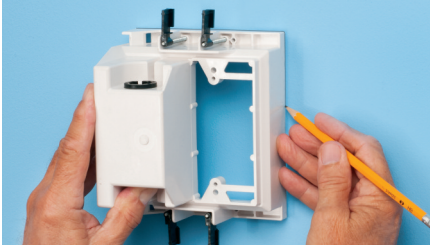
1 Stauffer Industrial Park
Scranton, PA 18517
800/233.4717
Fax 570/562.0646
www.aifittings.com

Patented/Other patents pending

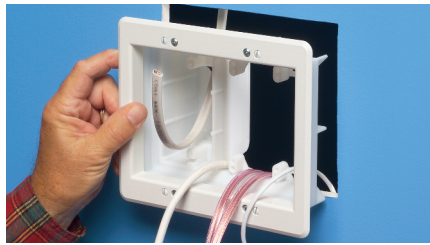
Recessed Plastic TV Box™

Power/Low Voltage Combination Box

RETROFIT - Two-gang TVBU505 shown



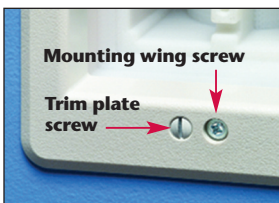
1 Use enclosure (without trim plate) as a template for opening. Cut hole.



2 Cut drywall. Attach trim plate to box. Pull wire/cables. Install box assembly in opening.



3 Tighten mounting wing screws to pull the box securely against the wall.



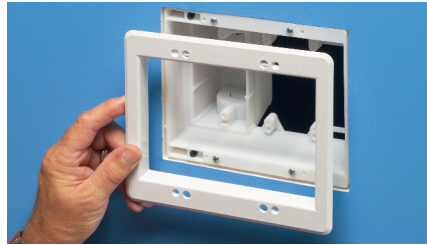
Mounting wing screw

Trim plate screw

NEW CONSTRUCTION - Three-gang TVBU507 shown



1 Attach box to stud using #6 screws. Use tabs on box for proper positioning of box depth.



3 Attach paintable trim plate with screws provided. See below, left for reference.

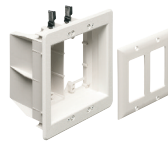


Positioning tabs

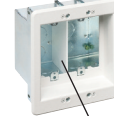
2 Positioning tabs are set for 1/2" and 5/8" drywall.



4 OPTION for new work: Tighten mounting wing screws to pull the box securely against the wall.



Non-Metallic
2-gang
TVBU505



STEEL
2-gang
TVBS505

Voltage separator



DVFR3C
2-gang
cover

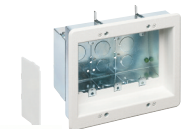
CATALOG NUMBER	UPC/DCI/NAED MFG #01 8997	DESCRIPTION	UNIT PKG	STD PKG
TVBU505	09680	Recessed Power/Low Voltage TV BOX with white non-metallic trim plate Two-gang NON-METALLIC Box	1	4
TVBU505GC	08974	Two-gang NON-METALLIC Box w ground clip for Canada	1	4
TVBS505	37955	Two-gang STEEL Box	1	4
DVFR3C	14337	Non-metallic Blank Cover for 2-gang box	10	10
TVBU507	09661	Three-gang NON-METALLIC Box	1	4
TVBU507GC	08976	Three-gang NON-METALLIC Box w ground clip for Canada	1	4
TVBS507	37956	Three-gang STEEL Box	1	4
DVFR3C	10570	Non-metallic Blank Cover for 3-gang box	10	10
TVB613	09630	Four-gang NON-METALLIC Box	1	1
TVB613GC	08968	Four-gang NON-METALLIC Box w ground clip for Canada	1	1
TVBS613	09633	Four-gang STEEL Box	1	1
TVB613C	09631	Non-metallic Blank Cover for 4-gang box	1	1



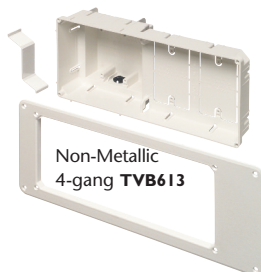
Non-Metallic 3-gang
TVBU507



DVFR3C
cover



STEEL 3-gang
TVBS507



Non-Metallic
4-gang TVB613



STEEL 4-gang
TVBS613



TVB613C
cover

Scan for details.



Distributed by



Arlington

1 Stauffer Industrial Park
Scranton, PA 18517
800/233.4717
Fax 570/562.0646
www.aifittings.com

Patented /Other patents pending
TVBU505 0113/25M

Recessed Power/Low Voltage TV Box™

NEW!
more on
reverse

For Flush-to-the-Wall Mounting of Flat Screen TVs



**2-GANG
TVBU505**
on Stud
in New
Construction



**2-GANG
TVBU505**
in Retrofit

Two-Gang Power/Low Voltage Box for New Work or Retrofit



2-GANG TVBU505
(with CED130 cable entry device)



**2-GANG
TVBU505**

Arlington's recessed TVBU505 non-metallic combination power and low voltage TV BOX™ is the secure, easy way to mount a flat screen TV flush against a wall. It features power in *one side*; low voltage in *the other* for Class 2 wiring of satellite or cable TV, speakers and more.

The job looks great! Plugs and connectors stay inside this two-gang box, without extending past the wall.

- Non-metallic box with paintable white trim plate
- Easy to install, secure installation in walls up to 1-1/2" thick
- Mounting wings hold box securely against the wall in retrofit projects
- Boxes screw-mount to stud in new construction
- Optional covers available for unused boxes
- Accommodates Arlington's SCOOP™ series entrance plates and hoods
- Other styles available:
 - Steel boxes with plastic trim plate
 - Non-metallic boxes with ground clip (Canada)
- cULus Listed



Scan for details.



Arlington

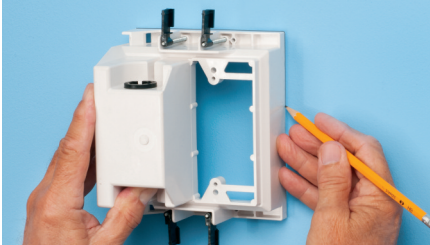
1 Stauffer Industrial Park
Scranton, PA 18517
800/233.4717
Fax 570/562.0646
www.aifittings.com

Patented/Other patents pending

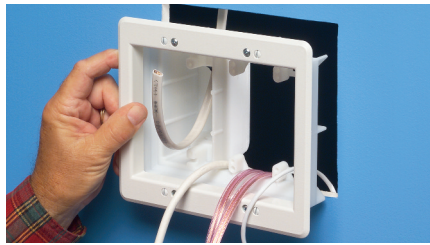
Recessed Plastic TV Box™

Power/Low Voltage Combination Box

RETROFIT - Two-gang TVBU505 shown



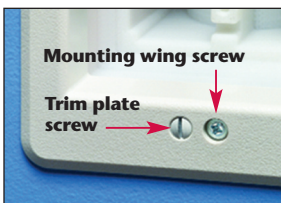
1 Use enclosure (*without trim plate*) as a template for opening. Cut hole.



2 Cut drywall. Attach trim plate to box. Pull wire/cables. Install box assembly in opening.



3 Tighten mounting wing screws to pull the box securely against the wall.



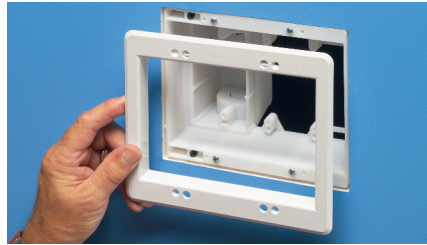
Mounting wing screw

Trim plate screw

NEW CONSTRUCTION - Three-gang TVBU507 shown



1 Attach box to stud using #6 screws. Use tabs on box for proper positioning of box depth.



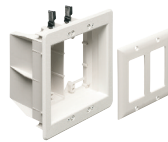
3 Attach paintable trim plate with screws provided. See below, left for reference.



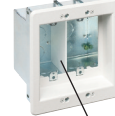
2 Positioning tabs are set for 1/2" and 5/8" drywall.



4 OPTION for new work: Tighten mounting wing screws to pull the box securely against the wall.



Non-Metallic 2-gang TVBU505



STEEL 2-gang TVBS505

Voltage separator



DVFR3C 2-gang cover

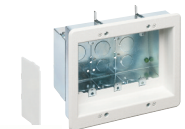
CATALOG NUMBER	UPC/DCI/NAED MFG #01 8997	DESCRIPTION	UNIT PKG	STD PKG
Recessed Power/Low Voltage TV BOX with white non-metallic trim plate				
TVBU505	09680	Two-gang NON-METALLIC Box	1	4
TVBU505GC	08974	Two-gang NON-METALLIC Box w ground clip for Canada	1	4
TVBS505	37955	Two-gang STEEL Box	1	4
DVFR3C	14337	Non-metallic Blank Cover for 2-gang box	10	10
TVBU507	09661	Three-gang NON-METALLIC Box	1	4
TVBU507GC	08976	Three-gang NON-METALLIC Box w ground clip for Canada	1	4
TVBS507	37956	Three-gang STEEL Box	1	4
DVFR3C	10570	Non-metallic Blank Cover for 3-gang box	10	10
TVB613	09630	Four-gang NON-METALLIC Box	1	1
TVB613GC	08968	Four-gang NON-METALLIC Box w ground clip for Canada	1	1
TVBS613	09633	Four-gang STEEL Box	1	1
TVB613C	09631	Non-metallic Blank Cover for 4-gang box	1	1



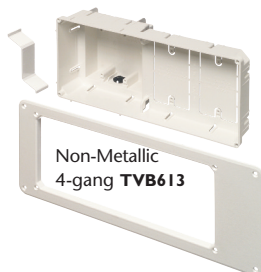
Non-Metallic 3-gang TVBU507



DVFR3C cover



STEEL 3-gang TVBS507



Non-Metallic 4-gang TVB613



STEEL 4-gang TVBS613



TVB613C cover



Arlington

1 Stauffer Industrial Park
Scranton, PA 18517
800/233.4717
Fax 570/562.0646
www.aifittings.com

Patented /Other patents pending
TVBU505 0113/25M

Scan for details.



Distributed by