



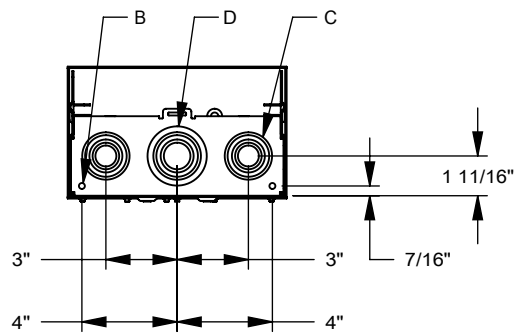
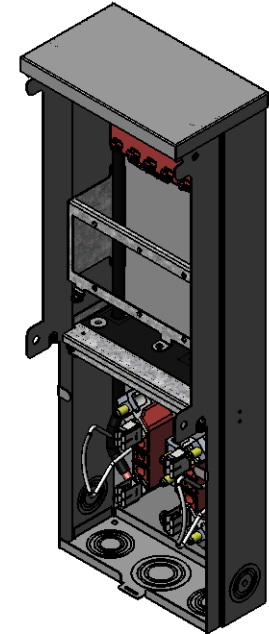
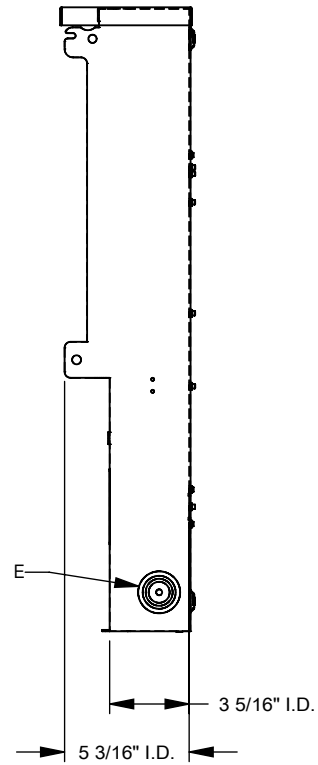
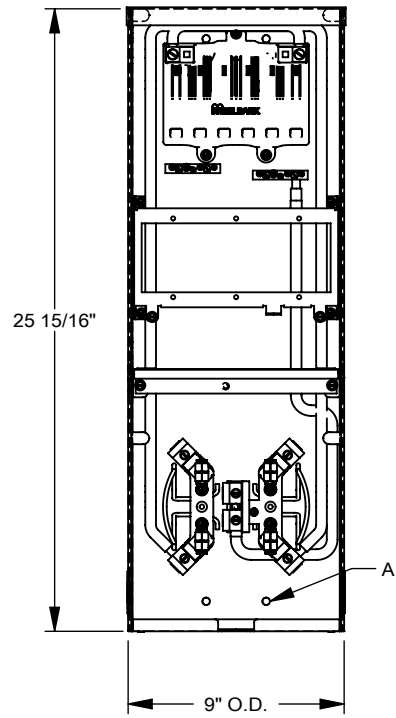
Catalog Number: U4908-O-11GR  
Item Description: 100A RL MTR P/O  
UPC Code: 784572271951

**Brand Name:** Milbank  
**Type:** Ringless Metered Power Supply Unit  
**Special Features:** 4 Terminal, Plain Top, Ground Bar, No Bypass, Single Power Head, 6 Branch Circuits  
**Application:** Temporary Power  
**Standard:** UL Listed  
**Voltage Rating:** Up to 240 Volts Alternating Current  
**Amperage Rating:** 125 Ampere Continuous  
**Wattage:** Not Applicable  
**Frequency Rating:** 60 Hertz  
**Phase:** 1 Phase  
**Number of Receptacles:** 2  
**Receptacle Configuration:** Two NEMA 5-20 Ground Fault Receptacles  
**Control:** Two Single Pole 20 Ampere Breakers, No Main Breaker  
**Material:** G90 Galvanized Steel with Powder Coat Finish  
**Mounting:** Surface Mount  
**Cable Size:** 6 AWG to 2/0 AWG  
**Enclosure:** Type 3R



*Utility requirements may vary. Always consult the serving utility for their requirements prior to ordering or installing this equipment. This product must always be installed by a licensed electrician. Installation of this equipment may require local electrical inspector approval.*

FEATURE TABLE		
ITEM	QTY	DESCRIPTION
A	4	U/L MNTG.EMBOSS
B	2	¼ SOLID K.O.
C	2	½, ¾, 1, 1¼, 1½ CONC. K.O.
D	1	¾, 1, 1¼, 1½, 2 CONC. K.O.
E	2	¼, ½, ¾, 1, 1¼, CONC. K.O.



Version:

1

All dimensions are +/- 1/16".  
 Drawing views are not to scale.  
 Utility requirements for this equipment may vary. Always consult the serving utility for their requirements prior to ordering or installing this equipment. This product must be installed by a licensed electrician. Installation of this equipment may require local electrical inspector approval.



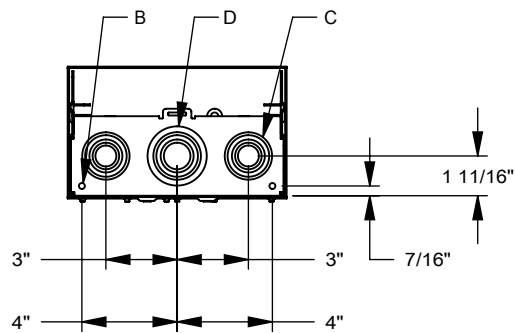
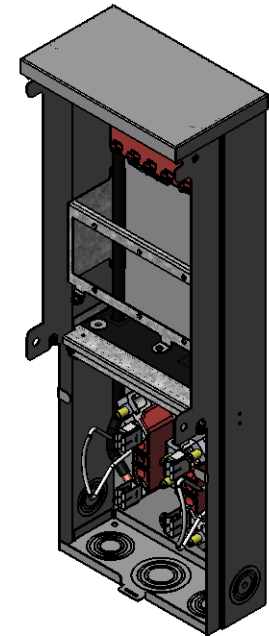
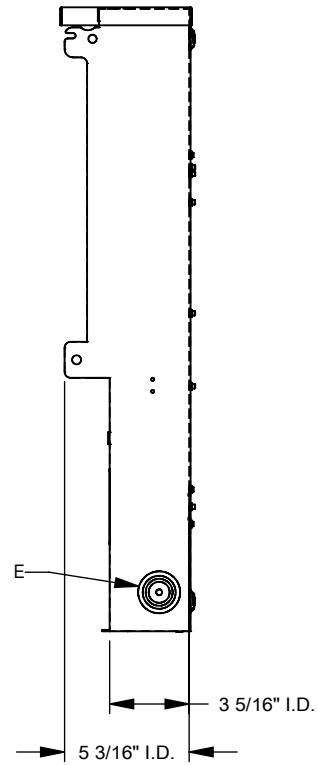
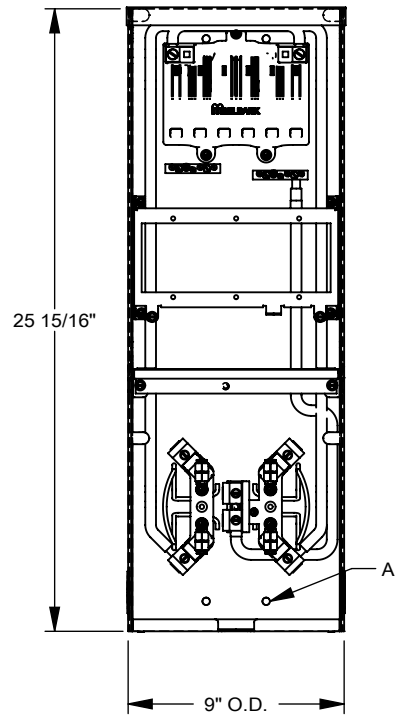
Catalog Number: U4908-O-11GR  
Item Description: 100A RL MTR P/O  
UPC Code: 784572271951

**Brand Name:** Milbank  
**Type:** Ringless Metered Power Supply Unit  
**Special Features:** 4 Terminal, Plain Top, Ground Bar, No Bypass, Single Power Head, 6 Branch Circuits  
**Application:** Temporary Power  
**Standard:** UL Listed  
**Voltage Rating:** Up to 240 Volts Alternating Current  
**Amperage Rating:** 125 Ampere Continuous  
**Wattage:** Not Applicable  
**Frequency Rating:** 60 Hertz  
**Phase:** 1 Phase  
**Number of Receptacles:** 2  
**Receptacle Configuration:** Two NEMA 5-20 Ground Fault Receptacles  
**Control:** Two Single Pole 20 Ampere Breakers, No Main Breaker  
**Material:** G90 Galvanized Steel with Powder Coat Finish  
**Mounting:** Surface Mount  
**Cable Size:** 6 AWG to 2/0 AWG  
**Enclosure:** Type 3R



*Utility requirements may vary. Always consult the serving utility for their requirements prior to ordering or installing this equipment. This product must always be installed by a licensed electrician. Installation of this equipment may require local electrical inspector approval.*

FEATURE TABLE		
ITEM	QTY	DESCRIPTION
A	4	U/L MNTG.EMBOSS
B	2	¼ SOLID K.O.
C	2	½, ¾, 1, 1¼, 1½ CONC. K.O.
D	1	¾, 1, 1¼, 1½, 2 CONC. K.O.
E	2	¼, ½, ¾, 1, 1¼, CONC. K.O.



Version:

1

All dimensions are +/- 1/16".  
 Drawing views are not to scale.  
 Utility requirements for this equipment may vary. Always consult the serving utility for their requirements prior to ordering or installing this equipment. This product must be installed by a licensed electrician. Installation of this equipment may require local electrical inspector approval.