

UT-300, UT-355 360° Ultrasonic Sensor

Architecturally appealing low profile appearance

SmartSet automatically selects optimal time delay and sensitivity

Depluggable terminal wiring for quick and easy installation



Accepts low voltage switch input for manual-on operation (UT-300, UT-305)

Ultrasonic diffusers give more comprehensive coverage

Walk-through mode increases savings potential

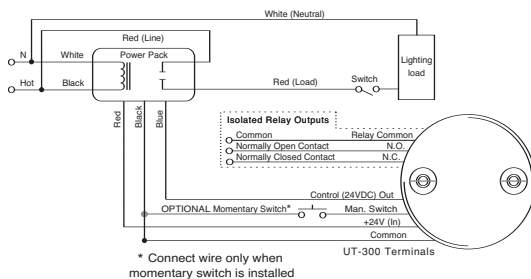
Specifications

- UT-300, UT-305: 24 VDC/VAC
- UT-355: 120/230/277/347 VAC, 50/60 Hz
- Time delays: SmartSet (automatic), fixed [5, 10, 15, 20, or 30 minutes], walk-through, test-mode
- Sensitivity adjustment: SmartSet (automatic) or reduced sensitivity
- Ultrasonic frequency of 40 kHz
- Isolated relay with N/O and N/C outputs rated for 1 Amp at 30 VDC/VAC (UT-300)
- Built-in light level sensor; 10 to 300 fc (107 to 3,229 lux) (UT-300, UT-355)
- Mounting options: ceiling tile; 4 square junction box with double gang mudring (UT-300, UT-305)
- Mounting options: 4 square junction box with double gang
- mudring; 4 inch octagonal junction box (UT-355)
- Units per power pack: UT-300 up to 2 (B), up to 3 (BZ); UT-305 up to 3 (B), up to 4 (BZ)
- 4.5" diameter x 1.02" (144.3mm x 25.9mm) (83.8mm x 55.9mm) Extends approx .36" from ceiling
- UL and CUL listed, 5 year warranty

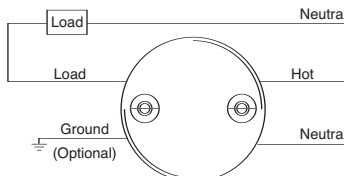
Applications

- Restrooms
- Large Offices
- Open Offices

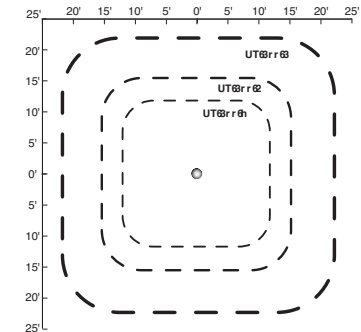
UT-300 Wiring



UT-355 Wiring



Coverage Patterns



Coverages represent half-step walking motion. Actual coverages can vary for each application based on room shape, use and obstacles.

Order Information

CATALOG #	VOLTAGE	CURRENT/LOAD REQ	COVERAGE
UT-300-X	24 VDC	43 mA	see diagram
UT-305-X	24 VDC	37 mA	
UT-355-X	120 VAC, 50/60 Hz	0-800 W	
	230/277 VAC, 50/60 Hz	Ballast/Tungsten	
	347 VAC, 50/60 Hz	0-1200 W Ballast	
		0-1500 W Ballast	

X = 1 for 500 ft² of coverage; -2 for 1000 ft²; -3 for 2000 ft².
All units are white and low voltage models use Watt Stopper power packs.
For line voltage installations requiring an adapter plate, order cat # CA-1.