

**Glare Free**



**WATTS: 86**

**WLD86LED**

**CCT: 4500K**

**LUMENS: 9,173**

**LPW: 107 CRI: 83**

**DIMMING: 10-100%**

**CCT: 3000K**

**LUMENS: 8,560**

**LPW: 98 CRI: 81**

**DIMMING: 10-100%**

Design is Protected by U.S. Patent No. 9,482,395



**Ordering Information**

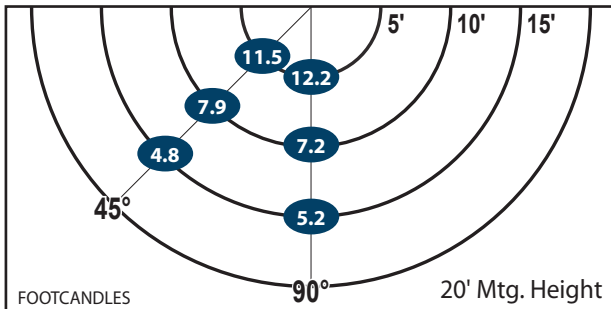
CATALOG #	DESCRIPTION	VOLTS	COLOR TEMP
<b>WLD86LED</b>	86W LED Wall Light	120-277	4500K
<b>WLD86LED3K</b>	86W LED Wall Light	120-277	3000K

**Options**

ADD SUFFIX #	DESCRIPTION
PC	120V Photocontrol
PM	208-277V Photocontrol
EB	Emergency Back-Up
4	480V Driver

Note: Atlas uses only premium LED compatible photocontrols

**Recommended Mounting Height - 20-22 ft.**



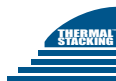
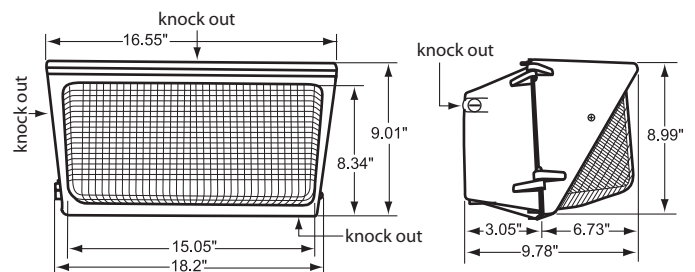
Mtg. Hgt.	FOOTCANDLES ON THE GROUND						Avg. FCs 450 SQ. FT.
	90°			45°			
	5'	10'	15'	5'	10'	15'	
20'	12.2	7.2	5.2	11.5	7.9	4.8	<b>8.1</b>
22'	10.4	6.8	4.6	9.6	7.2	4.6	<b>7.2</b>

**Performance**

- 95% Efficient Reflector Targets the Light
- Eliminates Glare & Offensive Light
- Less Wasted Light
- More Footcandles on the Ground
- Creates a Smooth & Uniform Light Pattern

**Dimensions and Specifications**

**Overall Height:** 9.01"      **Depth:** 9.78"  
**Overall Width:** 18.2"      **Weight:** 15 lbs.



\*The majority of Atlas Lighting Products are assembled in USA facilities by an American Workforce utilizing both Domestic and Foreign components



**Glare Free**



**WATTS: 86**

**WLD86LED**

**CCT: 4500K**

**LUMENS: 9,173**

**LPW: 107 CRI: 83**

**DIMMING: 10-100%**

**CCT: 3000K**

**LUMENS: 8,560**

**LPW: 98 CRI: 81**

**DIMMING: 10-100%**

Design is Protected by U.S. Patent No. 9,482,395



**Ordering Information**

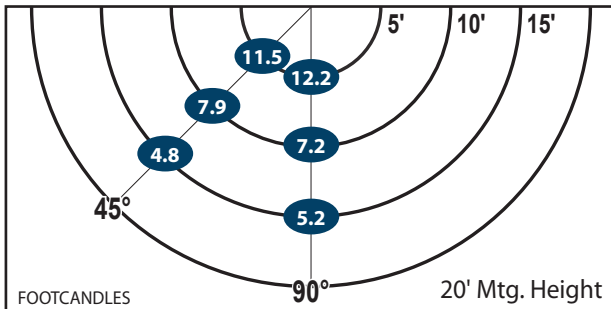
CATALOG #	DESCRIPTION	VOLTS	COLOR TEMP
<b>WLD86LED</b>	86W LED Wall Light	120-277	4500K
<b>WLD86LED3K</b>	86W LED Wall Light	120-277	3000K

**Options**

ADD SUFFIX #	DESCRIPTION
PC	120V Photocontrol
PM	208-277V Photocontrol
EB	Emergency Back-Up
4	480V Driver

Note: Atlas uses only premium LED compatible photocontrols

**Recommended Mounting Height - 20-22 ft.**



Mtg. Hgt.	FOOTCANDLES ON THE GROUND						Avg. FCs 450 SQ. FT.
	90°			45°			
	5'	10'	15'	5'	10'	15'	
20'	12.2	7.2	5.2	11.5	7.9	4.8	<b>8.1</b>
22'	10.4	6.8	4.6	9.6	7.2	4.6	<b>7.2</b>

**Performance**

- 95% Efficient Reflector Targets the Light
- Eliminates Glare & Offensive Light
- Less Wasted Light
- More Footcandles on the Ground
- Creates a Smooth & Uniform Light Pattern

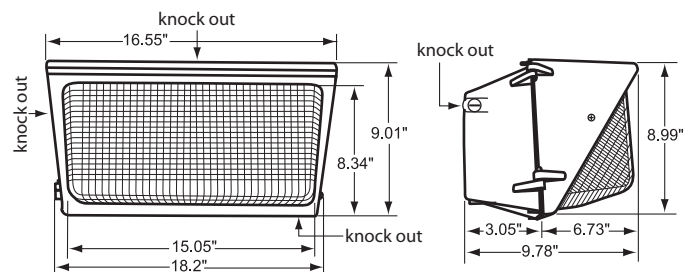
**Dimensions and Specifications**

**Overall Height: 9.01"**

**Depth: 9.78"**

**Overall Width: 18.2"**

**Weight: 15 lbs.**



\*The majority of Atlas Lighting Products are assembled in USA facilities by an American Workforce utilizing both Domestic and Foreign components

