

**Glare Free**



**WATTS: 64**

**WLM64LED**

**CCT: 4500K**

**CCT: 3000K**

**LUMENS: 6,349**

**LUMENS: 5,699**

**LpW: 101 CRI: 83**

**LpW: 92 CRI: 81**

**DIMMING: 10-100%**

**DIMMING: 10-100%**

Design is Protected by U.S. Patent No. 9,482,395



**Ordering Information**

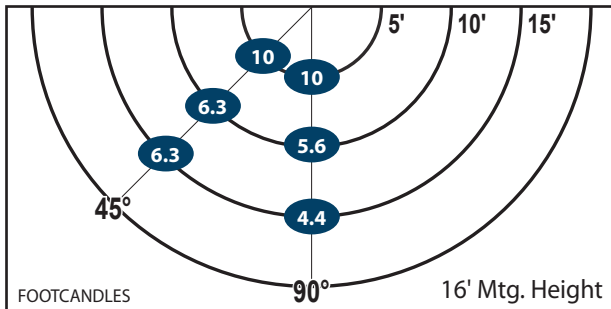
CATALOG #	DESCRIPTION	VOLTS	COLOR TEMP
<b>WLM64LED</b>	64W LED Wall Light	120-277	4500K
<b>WLM64LED3K</b>	64W LED Wall Light	120-277	3000K

**Options**

ADD SUFFIX #	DESCRIPTION
PC	120V Photocontrol
PM	208-277V Photocontrol
EB	Emergency Back-Up
4	480V Driver

Note: Atlas uses only premium LED compatible photocontrols

**Recommended Mounting Height - 16-18 ft.**



Mtg. Hgt.	FOOTCANDLES ON THE GROUND						Avg. FCs 450 SQ. FT.
	90°			45°			
	5'	10'	15'	5'	10'	15'	
16'	10.0	6.3	6.3	10.0	5.6	4.4	<b>7.1</b>
18'	8.5	5.3	5.0	8.3	5.0	3.8	<b>6.0</b>

**Performance**

- **95% Efficient Reflector Targets the Light**
- **Eliminates Glare & Offensive Light**
- **Less Wasted Light**
- **More Footcandles on the Ground**
- **Creates a Smooth & Uniform Light Pattern**

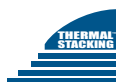
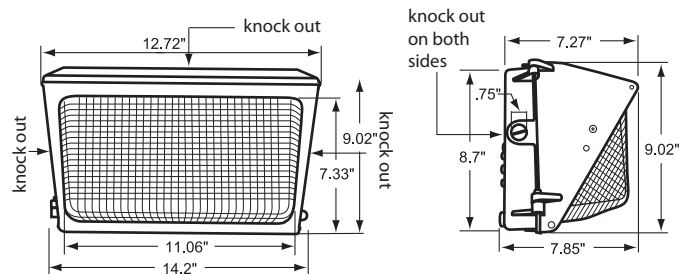
**Dimensions and Specifications**

**Overall Height: 9.02"**

**Depth: 7.85"**

**Overall Width: 14.2"**

**Weight: 9.2 lbs.**



\*The majority of Atlas Lighting Products are assembled in USA facilities by an American Workforce utilizing both Domestic and Foreign components



**Glare Free**



**WATTS: 64**

**WLM64LED**

**CCT: 4500K**

**CCT: 3000K**

**LUMENS: 6,349**

**LUMENS: 5,699**

**LpW: 101 CRI: 83**

**LpW: 92 CRI: 81**

**DIMMING: 10-100%**

**DIMMING: 10-100%**

Design is Protected by U.S. Patent No. 9,482,395



**Ordering Information**

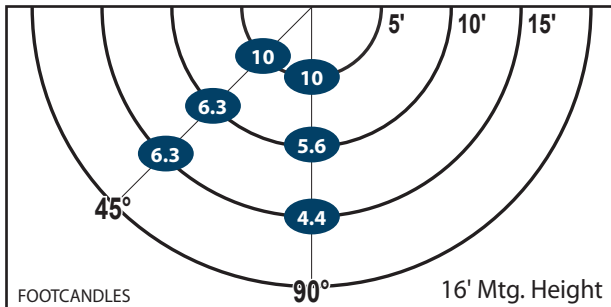
CATALOG #	DESCRIPTION	VOLTS	COLOR TEMP
<b>WLM64LED</b>	64W LED Wall Light	120-277	4500K
<b>WLM64LED3K</b>	64W LED Wall Light	120-277	3000K

**Options**

ADD SUFFIX #	DESCRIPTION
PC	120V Photocontrol
PM	208-277V Photocontrol
EB	Emergency Back-Up
4	480V Driver

Note: Atlas uses only premium LED compatible photocontrols

**Recommended Mounting Height - 16-18 ft.**



Mtg. Hgt.	FOOTCANDLES ON THE GROUND						Avg. FCs 450 SQ. FT.
	90°			45°			
	5'	10'	15'	5'	10'	15'	
16'	10.0	6.3	6.3	10.0	5.6	4.4	<b>7.1</b>
18'	8.5	5.3	5.0	8.3	5.0	3.8	<b>6.0</b>

**Performance**

- **95% Efficient Reflector Targets the Light**
- **Eliminates Glare & Offensive Light**
- **Less Wasted Light**
- **More Footcandles on the Ground**
- **Creates a Smooth & Uniform Light Pattern**

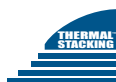
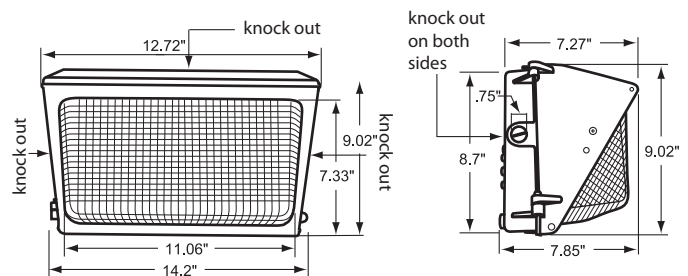
**Dimensions and Specifications**

**Overall Height: 9.02"**

**Depth: 7.85"**

**Overall Width: 14.2"**

**Weight: 9.2 lbs.**



\*The majority of Atlas Lighting Products are assembled in USA facilities by an American Workforce utilizing both Domestic and Foreign components

