

# BREATHER/DRAINS

## Combination Breather/Drains

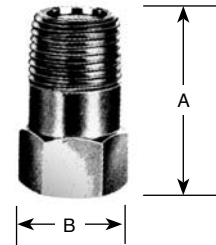
### XDB Series

#### FEATURES

- Stainless steel combination breather drain. Install in top of enclosures as breather. Install in bottom of enclosure as drain.

#### NOMINAL DIMENSIONS [inches]

Catalog #	Thread	A	B
XDB2	½ NPT	1 ⅝	⅞



**XDB2**

#### Certifications

Class I, Groups C & D  
 Class II, Groups E, F & G

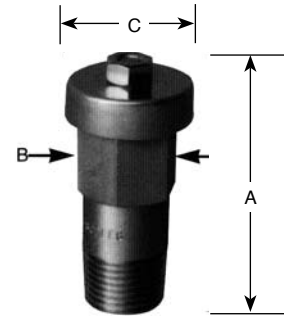
Class III  
 UL Standard 886  
 CSA Standard C22.2 No. 30



\*ATEX APPLICATION NOTE: Maximum Enclosure Volume 41000 cm<sup>3</sup> (2500 in<sup>3</sup>)

#### NOMINAL DIMENSIONS [inches]

Catalog #	Thread	A	B	C
XDBH2	½ NPT	½ NPT	⅞ HEX	1 ¼



**XDBH2**

#### Certifications

Class I, Groups A, B, C & D  
 Class II, Groups E, F & G  
 Class III

UL Standard 886  
 CSA Standard C22.2 No. 30  
 ATEX EExd IIB DEMKO  
 00E.004127U  
 (when installed in XCEX & XJ\_X enclosures)



## Type Bd Series

#### FEATURES

- Allows the air inside an 'Ex d' Flameproof or Class I, Div 1 enclosure to breathe with the surrounding atmosphere.
- Allows any moisture that enters the enclosure to drain while maintaining the overall integrity of the installation.

PART NUMBER BUILD **Bd 20 N NT**

BASE CATALOG NUMBER

#### THREAD DESIGNATION

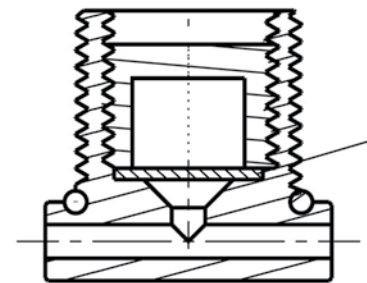
Metric	NPT	NPS	ISO	ISO	ET	PG
20	½	½S	½P	½T	¾E	13
25	¾	¾S	¾P	¾T	1E	16P

O-RING

Nitrile (std.) - NT  
 Silicone - SC

MATERIAL

Nickel Plated Brass - N  
 316 Stainless Steel - S



**Bd Series**

#### Certifications

Class I, Div 1 Groups A, B, C & D  
 AExd IIC / AExe II Class I, Zone 1

II 2 GD Exd IIC/Exe II Category 2 & 3  
 CSA Standard C22.2 No. 30



# BREATHER/DRAINS

## Combination Breather/Drains

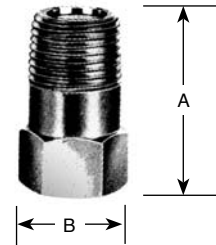
### XDB Series

#### FEATURES

- Stainless steel combination breather drain. Install in top of enclosures as breather. Install in bottom of enclosure as drain.

#### NOMINAL DIMENSIONS [inches]

Catalog #	Thread	A	B
XDB2	½ NPT	1 ⅝	⅞



**XDB2**

#### Certifications

Class I, Groups C & D  
 Class II, Groups E, F & G

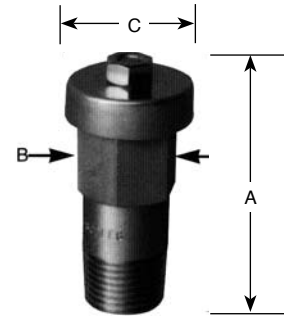
Class III  
 UL Standard 886  
 CSA Standard C22.2 No. 30



\*ATEX APPLICATION NOTE: Maximum Enclosure Volume 41000 cm<sup>3</sup> (2500 in<sup>3</sup>)

#### NOMINAL DIMENSIONS [inches]

Catalog #	Thread	A	B	C
XDBH2	½ NPT	½ NPT	⅞ HEX	1 ¼



**XDBH2**

#### Certifications

Class I, Groups A, B, C & D  
 Class II, Groups E, F & G  
 Class III

UL Standard 886  
 CSA Standard C22.2 No. 30  
 ATEX EExd IIB DEMKO  
 00E.004127U  
 (when installed in XCEX & XJ\_X enclosures)



## Type Bd Series

#### FEATURES

- Allows the air inside an 'Ex d' Flameproof or Class I, Div 1 enclosure to breathe with the surrounding atmosphere.
- Allows any moisture that enters the enclosure to drain while maintaining the overall integrity of the installation.

PART NUMBER BUILD **Bd 20 N NT**

BASE CATALOG NUMBER

#### THREAD DESIGNATION

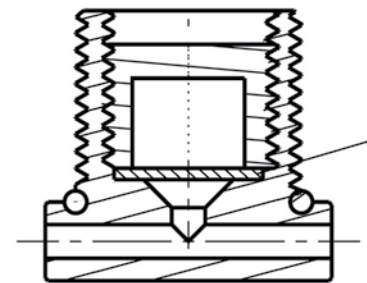
Metric	NPT	NPS	ISO	ISO	ET	PG
20	½	½S	½P	½T	¾E	13
25	¾	¾S	¾P	¾T	1E	16P

O-RING

Nitrile (std.) - NT  
 Silicone - SC

MATERIAL

Nickel Plated Brass - N  
 316 Stainless Steel - S



**Bd Series**

#### Certifications

Class I, Div 1 Groups A, B, C & D  
 AExd IIC / AExe II Class I, Zone 1

II 2 GD Exd IIC/Exe II Category 2 & 3  
 CSA Standard C22.2 No. 30

